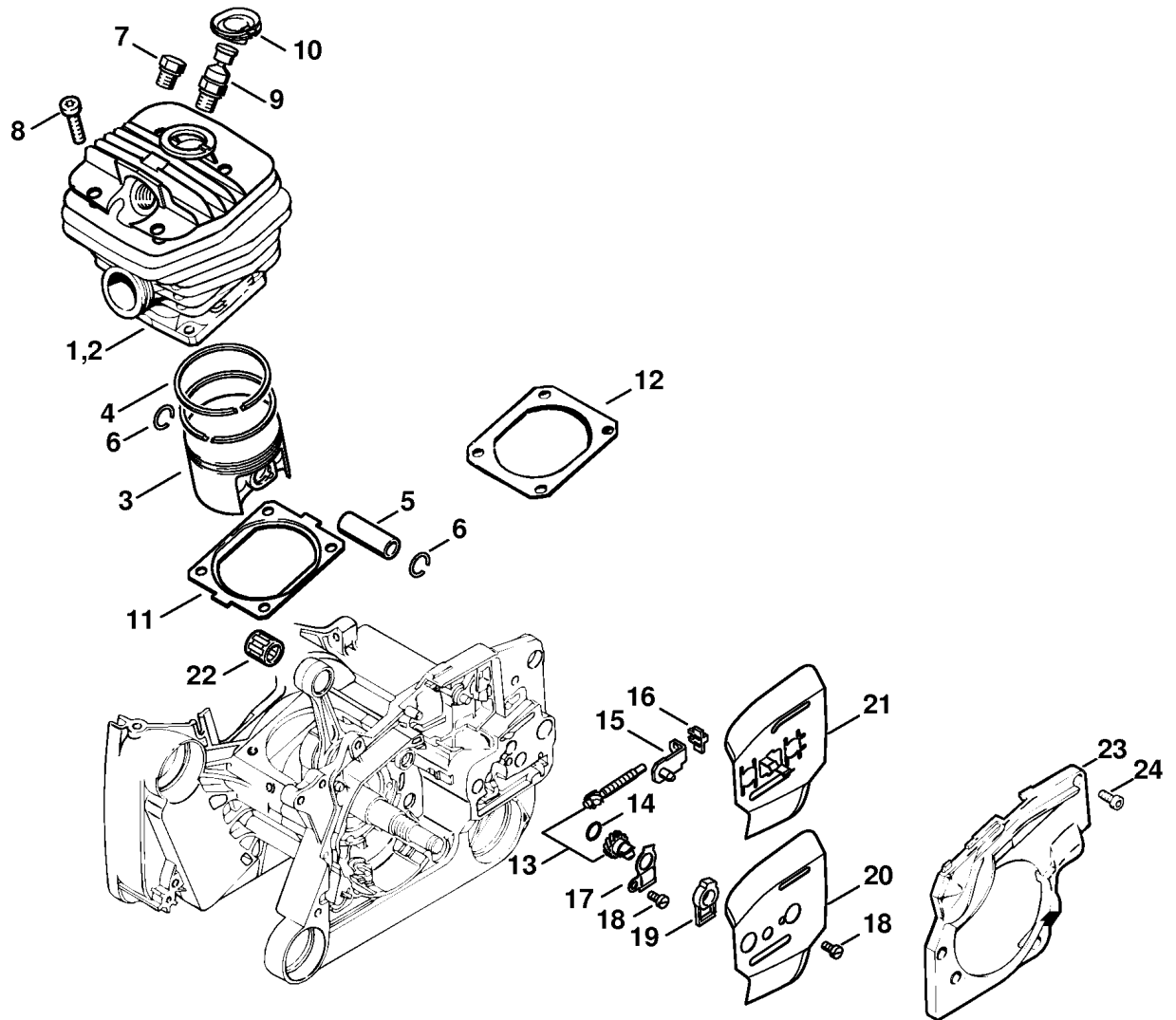


178ET066 SC

Reference	Item number	Qty	Description
1	1122 020 2116	1	Crankcase □ 3 - 14
2	* 1122 020 2113	1	Crankcase (10.2007) □ 3 - 13, 15
3	0000 988 5211	1	Connector
4	9371 470 2610	2	Cylindrical pin 5x18
5	0000 974 1200	1	Notched pin 2.6x8
6	1120 162 5200	1	Pin
7	1121 162 5205	1	Pin
8	1121 162 5200	2	Pin
9	1128 640 9100	1	Valve
10	9503 003 6676	1	Grooved ball bearing 6203
11	9523 003 4555	1	Grooved ball bearing 17x40x14
12	9022 371 1020	6	Spline screw IS-M5x20
13	1128 084 8302	1	Reflector foil
14	1138 664 2400	2	Collar screw
15	* 0000 953 6605	2	Collar screw M8 (10.2007)
16	9640 003 1850	1	Oil seal 17x32.9x3.6
17	9640 003 1560	1	Oil seal 15x22x4
18	1122 029 0507	1	Gasket
19	1122 030 0408	1	Crankshaft (25.2005) □ 20
20	1120 036 8500	1	Woodruff key 2x3.7
21	1122 647 9400	1	Hose
22	1117 640 3800	1	Pickup body
23	0000 350 0520	1	Filler cap □ 24 - 26
24	0000 359 1220	1	Sealing ring
25	0000 350 0900	1	Rope
26	0000 353 0600	1	Hook
27	1125 084 8900	1	Grommet
	1122 007 1053	1	Set of gaskets □ 13, 16 - 18

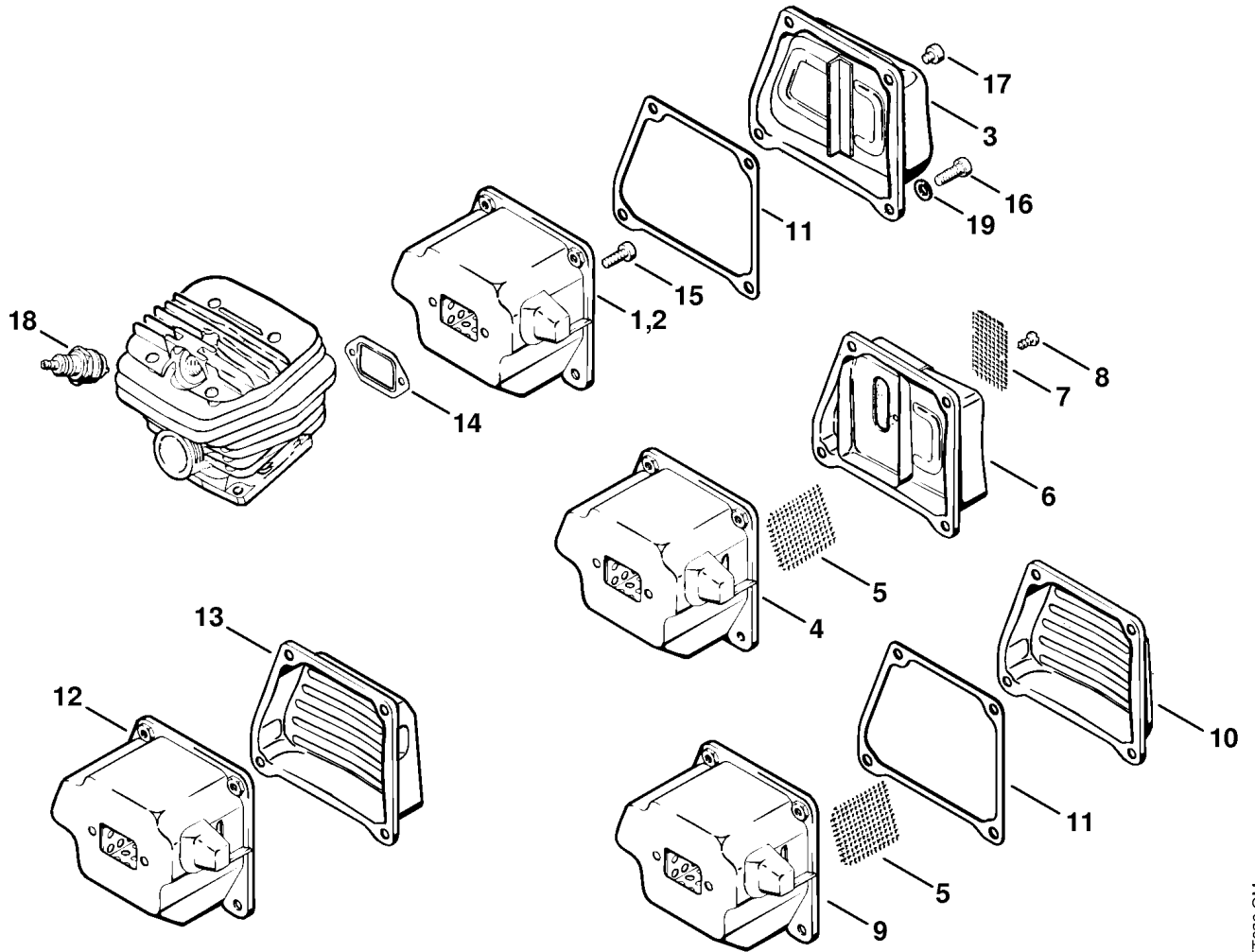
(1) MS 660, (2) MS 660-W, (3) MS 660-Magnum, (4) MS 660-R Magnum, (5) MS 660-Arctic,
(6) MS 660-Magnum BR



178ET001 SC

Reference	Item number	Qty	Description
1	1122 020 1211	1	Cylinder with piston Ø 54 mm (1-5) □ 3 - 7
2 *	1122 020 1209	1	Cylinder with piston Ø 54 mm (1,2) (27.2003) □ 3 - 8
2	1122 020 1209	1	Cylinder with piston Ø 54 mm (3) AUS, NZ □ 3 - 8
2	1122 020 1209	1	Cylinder with piston Ø 54 mm (6) □ 3 - 8
3	1122 030 2005	1	Piston Ø 54 mm □ 4 - 6
4	1122 034 3001	2	Piston ring Ø 54x1.2 mm
5	1122 034 1500	1	Piston pin 12x8x33
6	9463 650 1200	2	Snap ring 12x1
7	1122 025 2200	1	Plug
8	9022 371 1350	4	Spline screw IS-M6x25
9	1128 020 9400	1	Decompression valve
10	1122 084 1405	1	Cover
11	1122 029 2301	1	Cylinder gasket 0.5 mm
12	1122 029 2306	1	Cylinder gasket 1 mm (1) low compression
13	1125 007 1021	1	Spur gear / chain adjusting screw kit □ 14
14	9646 945 0490	1	O-ring 7x1.5
15	1125 640 1900	1	Tensioner slide
16	1125 664 1400	1	Thrust pad
17	1122 664 2200	1	Cover plate
18	9041 216 0630	2	Pan head screw M4x8
19	1122 664 4500	1	Support
20	1128 664 1001	1	Inner side plate 0.9 mm
21	1128 664 1002	1	Inner side plate (B)
22	9512 003 3281	1	Needle cage 12x17x13
23	1122 021 1105	1	Cover
24	9022 313 0660	4	Spline screw IS-M4x12
	1122 007 1053	1	Set of gaskets □ 11

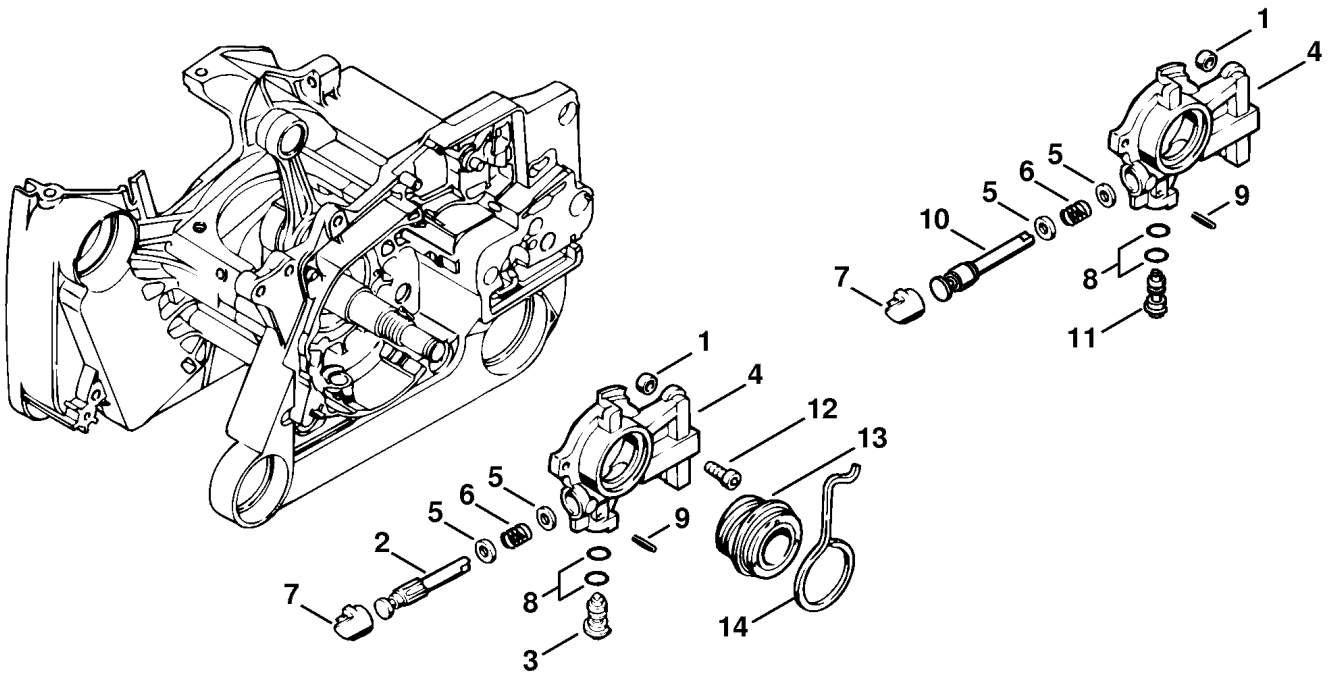
(1) MS 660, (2) MS 660-W, (3) MS 660-Magnum, (4) MS 660-R Magnum, (5) MS 660-Arctic,
(6) MS 660-Magnum BR



178ET026 GM

Reference	Item number	Qty	Description
1	1122 140 0604	1	Muffler (1,2) □ 3
2 *	1122 140 0602	1	Muffler (1,2) (27.2003) □ 3
3	1122 145 0801	1	Exhaust casing (1,2)
4	1122 140 0603	1	Muffler (3) AUS, NZ □ 5 - 8
5	1122 141 9001	1	Screen (3,4,5) USA, CDN
6	1122 140 0800	1	Exhaust casing (3) □ 7, 8
7	1118 141 9005	1	Screen (3)
8	9099 021 0810	1	Self-tapping screw 4.2x9.5 (3)
9	1122 140 0613	1	Muffler (3,4,5) □ 5, 10
10	1122 145 0807	1	Exhaust casing (4,5)
11	1122 149 0500	1	Gasket (1-5)
12	1122 140 0614	1	Muffler (6) □ 13
13	1122 145 0811	1	Exhaust casing (6)
14	1125 149 0601	1	Muffler gasket
15	9022 341 0980	2	Spline screw IS-M5x16
16	9022 341 1300	2	Spline screw IS-M6x20
17	9022 341 0910	2	Spline screw IS-M5x6
18	1110 400 7005	1	Spark plug Bosch WSR 6 F
18	0000 400 7000	1	Spark plug NGK BPMR7A
19	0000 148 6000	2	Tensioning gear AUS, NZ
	1122 007 1053	1	Set of gaskets □ 14

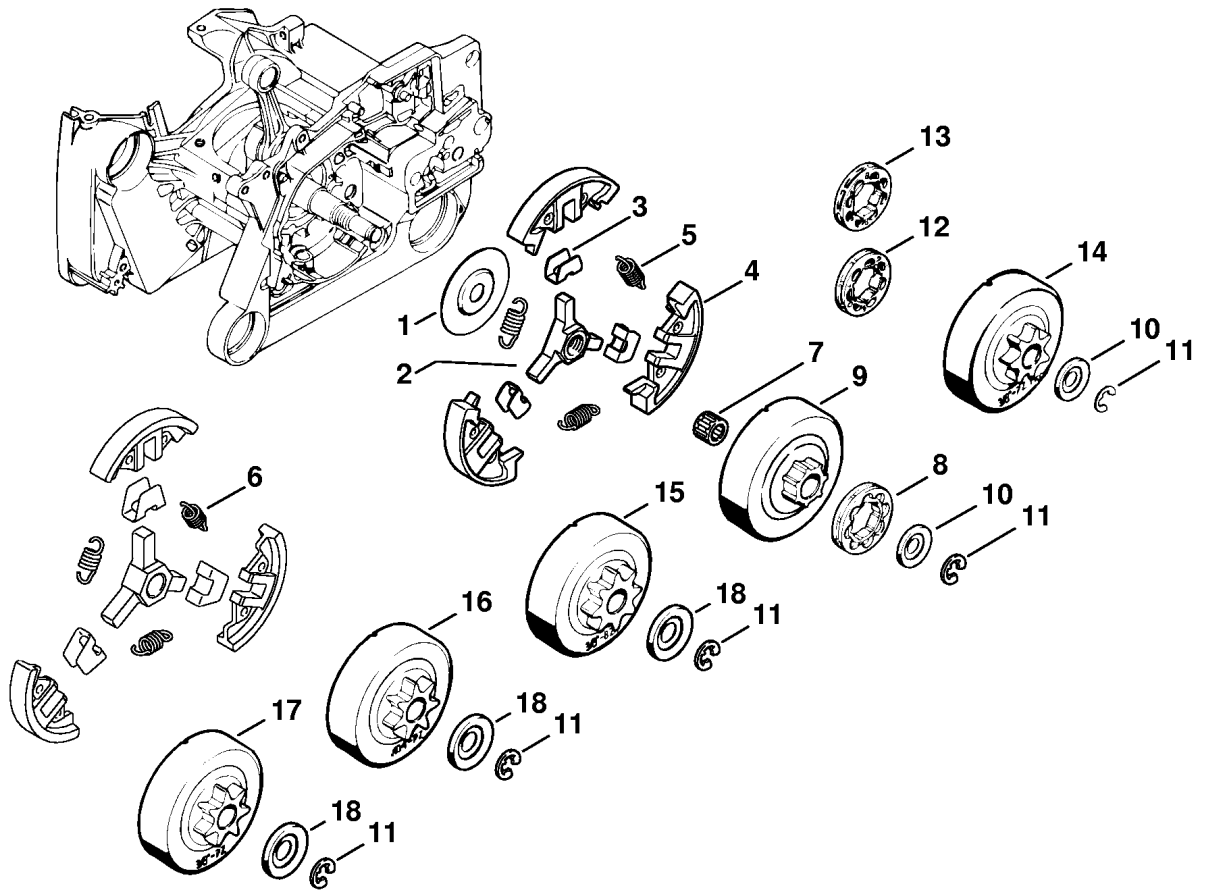
(1) MS 660, (2) MS 660-W, (3) MS 660-Magnum, (4) MS 660-R Magnum, (5) MS 660-Arctic,
(6) MS 660-Magnum BR



178ET002 SC

Reference	Item number	Qty	Description
1	1122 649 5000	1	Sealing ring B4x2
	1122 640 3205	1	Oil pump (0.9 mm stroke) (1-3,5) □ 2 - 9
2	1122 647 0601	1	Pump piston
3	1128 647 4806	1	Control bolt
4	1122 640 3005	1	Pump housing
5	0000 958 0611	2	Washer
6	0000 997 0629	1	Compression spring
7	1125 647 7002	1	Plug
8	9646 945 0160	2	O-ring 4x2
9	9380 620 1090	1	Roll pin 2x10
	1122 640 3201	1	Oil pump (1.15 mm stroke) (3,4,5) □ 4 - 11
10	1122 647 0602	1	Pump piston
11	1128 647 4802	1	Control bolt
12	9022 313 0660	2	Spline screw IS-M4x12
13	1122 640 7105	1	Worm
			□ 14
14	1122 647 2401	1	Spring

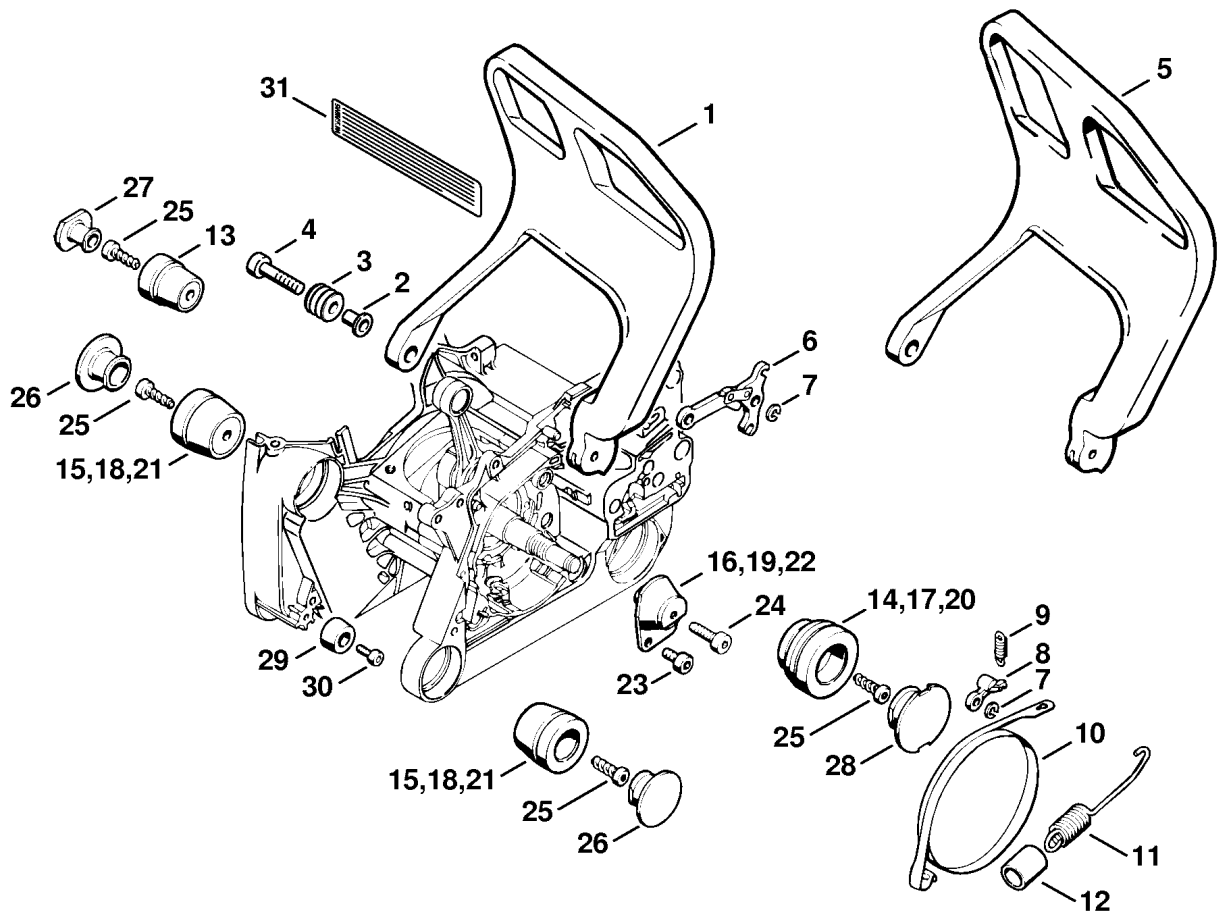
(1) MS 660, (2) MS 660-W, (3) MS 660-Magnum, (4) MS 660-R Magnum, (5) MS 660-Arctic,
(6) MS 660-Magnum BR



178ET059 SC

Reference	Item number	Qty	Description
	1122 160 2002	1	Clutch (64.2005) □ 2 - 5
1	1122 162 1000	1	Cover washer
2	1122 160 2300	1	Carrier □ 1
3	1122 162 3005	3	Retainer
4	1122 162 0801	3	Clutch shoe (10.2008), (64.2005)
5	0000 997 0912	3	Tension spring
6 *	0000 997 0911	3	Tension spring (10.2008)
7	9512 933 2382	1	Needle cage 10x16x13
	1122 007 1001	1	Rim sprocket kit 3/8" 8T □ 8 - 11
8	0000 642 1216	1	Rim sprocket 3/8" 8T
9		1	Clutch drum (D)
10	0000 958 1032	1	Washer Ø 27 mm
11	9460 624 0801	1	E-clip 8x1.3
	1122 007 1000	1	Rim sprocket kit 3/8" 7T □ 9 - 12
12	0000 642 1223	1	Rim sprocket 3/8" 7T
	1122 007 1002	1	Rim sprocket kit 0.404" 7T □ 9 - 11, 13
13	0000 642 1207	1	Rim sprocket 0.404" 7T
14	1122 640 2006	1	Chain sprocket 3/8" 7T Picco
15	1122 640 2000	1	Chain sprocket 3/8" 8T (B)
16	1122 640 2001	1	Chain sprocket 0.404" 7T (B)
17	1122 640 2002	1	Chain sprocket 3/8" 7T (B)
18	0000 958 1029	1	Washer Ø 33 mm (B)

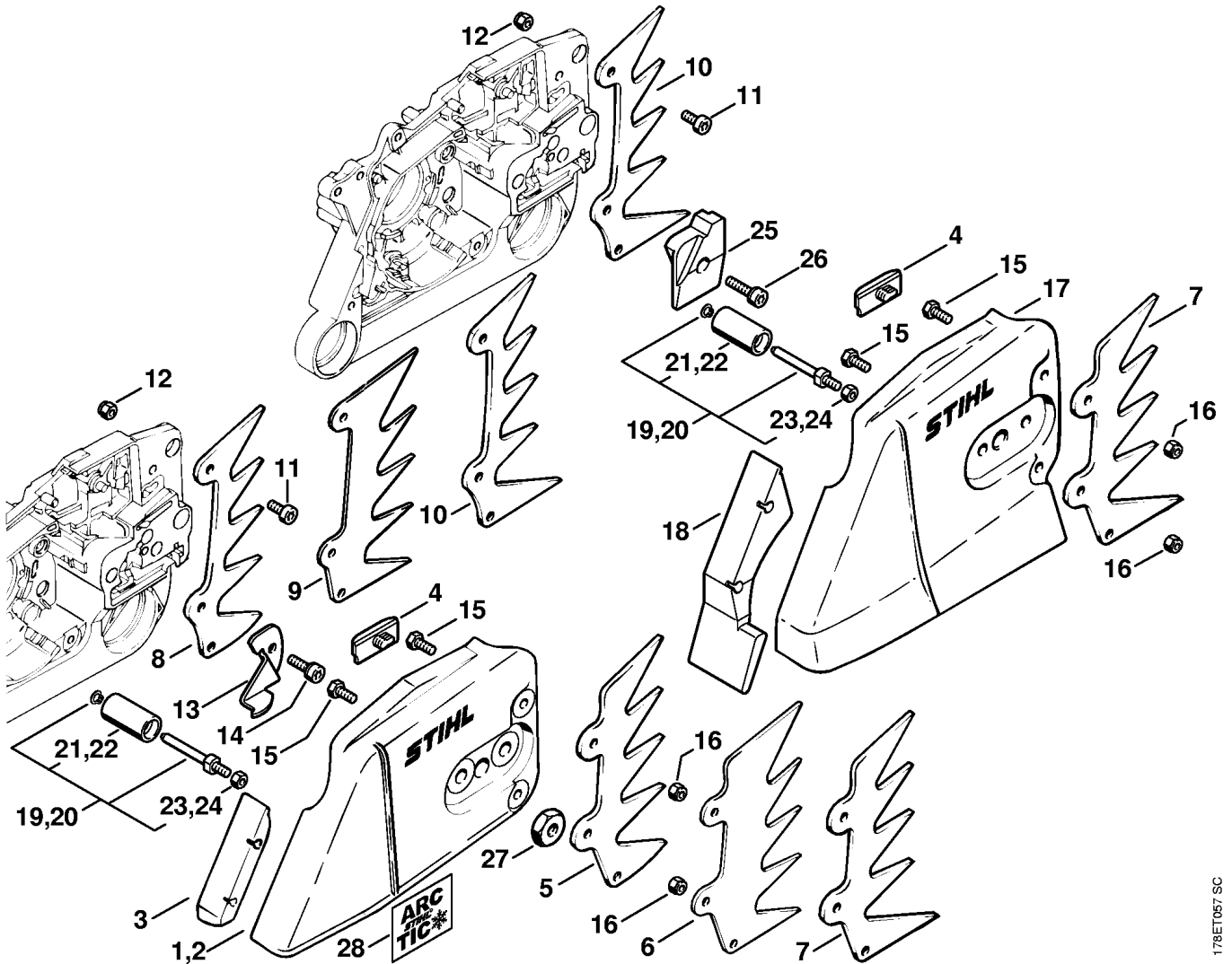
(1) MS 660, (2) MS 660-W, (3) MS 660-Magnum, (4) MS 660-R Magnum, (5) MS 660-Arctic,
(6) MS 660-Magnum BR



178ET034.SC

Reference	Item number	Qty	Description
1	1122 790 9101	1	Hand guard (1-6) □ 2 - 4
2	1124 792 5500	1	Bushing
3	1124 792 5505	1	Bushing
4	9022 341 1090	1	Spline screw IS-M5x40
5 *	1122 790 9102	1	Hand guard (4,5) (10.2008) □ 2 - 4
6	1128 160 5000	1	Lever
7	9460 624 0400	2	E-clip 4
8	1121 162 5010	1	Lever
9	0000 997 0628	1	Spring
10	1122 160 5400	1	Brake band
11	1122 160 5500	1	Tension spring □ 12
12	1125 162 8002	1	Hose 20 mm / 13/16" AV system soft:
13	1122 790 9905	1	Annular buffer 1122/05
14	1122 790 9901	1	Annular buffer 1122/01
15	1125 790 9906	2	Annular buffer 1125/06
16	1122 790 9921	1	Annular buffer 1122/21 AV system normal:
13	1122 790 9905	1	Annular buffer 1122/05
17	1122 790 9900	1	Annular buffer 1122/00
18	1125 790 9904	2	Annular buffer 1125/04
19	1122 790 9920	1	Annular buffer 1122/20 AV system hard:
13	1122 790 9905	1	Annular buffer 1122/05
20	1122 790 9902	1	Annular buffer 1122/02
21	1125 790 9910	2	Annular buffer 1125/10
22	1122 790 9922	1	Annular buffer 1122/22
23	9022 341 0960	2	Spline screw IS-M5x12
24	9022 341 0980	1	Spline screw IS-M5x16
25	9074 478 4435	4	Pan head self-tapping screw IS-P6x19
26	1125 791 7306	2	Plug
27	1122 791 7301	1	Plug
28	1122 791 7300	1	Plug
29	1122 790 9300	1	Rubber buffer
30	9022 313 0660	1	Spline screw IS-M4x12
31	0000 967 3612	1	Instruction label USA

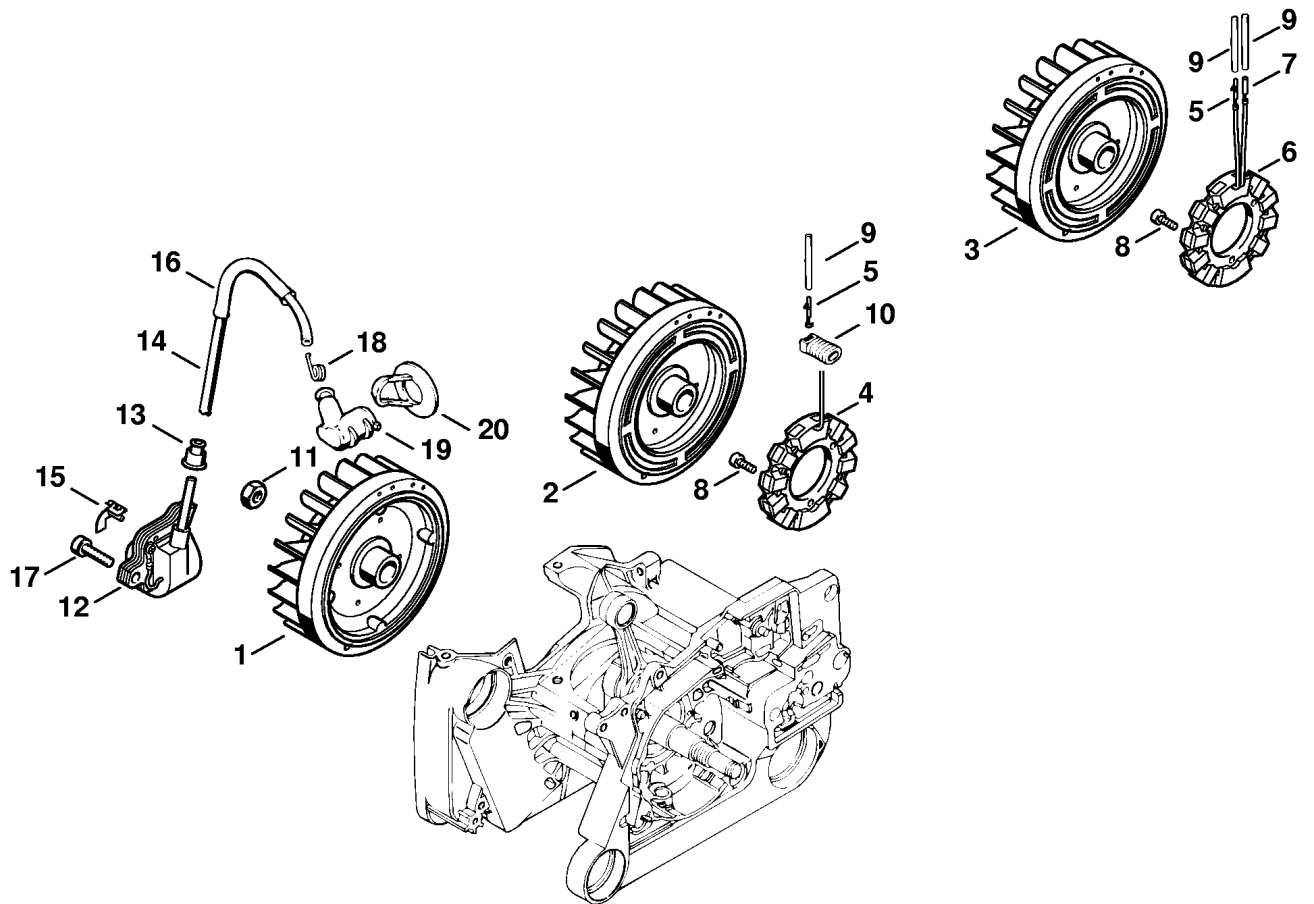
(1) MS 660, (2) MS 660-W, (3) MS 660-Magnum, (4) MS 660-R Magnum, (5) MS 660-Arctic,
(6) MS 660-Magnum BR



178ET057 SC

Reference	Item number	Qty	Description
1	1122 640 1707	1	Chain sprocket cover (1,2,3,6) □ 3, 4
2 *	1125 640 1701	1	Chain sprocket cover (B) (1,2,3,6) (10.2007) □ 3, 4
3	1125 656 1501	1	Guard (1,2,3,6)
4	1121 648 6610	2	Bumper strip
5	1122 664 0500	1	Bumper spike (1,2)
6	1122 664 0503	1	Bumper spike (3)
7	1122 664 0501	1	Bumper spike (4,5,6)
8	1122 664 0505	1	Bumper spike (1,2)
9	1122 664 0508	1	Bumper spike (3)
10	1122 664 0506	1	Bumper spike (4,5,6)
11	9022 341 0960	1	Spline screw IS-M5x12
12	9214 320 0700	1	Lock nut M5
13	1122 656 7700	1	Chain catcher (1,2,3,6)
14	9022 341 1019	1	Spline screw IS-M5x20 (1,2,3,6)
15	9008 319 0960	2	Hexagon head screw M5x12
16	9214 320 0700	2	Lock nut M5
	1122 640 1708	1	Chain sprocket cover (4,5) □ 4, 7, 15 - 19, 21, 24
17	1122 648 0403	1	Chain sprocket cover (4,5)
18	1122 656 1510	1	Guard (4,5)
19	1122 650 7700	1	Chain catcher (4,5) □ 21, 24
20	1122 650 7700	1	Chain catcher (3) AUS, NZ □ 22, 23
21	1122 656 6600	1	Sleeve (4,5)
22	1122 656 6600	1	Sleeve (3) AUS, NZ
23	9214 320 0700	1	Lock nut M5 (3) AUS, NZ
24	9214 320 0700	1	Lock nut M5 (4,5)
25	1122 640 8300	1	Bumper strip (4,5)
26	9022 341 1019	1	Spline screw IS-M5x20 (4,5)
27	0000 955 0801	2	Hexagon nut M8
28	0000 967 3714	1	Instruction label ARCTIC (5) CDN

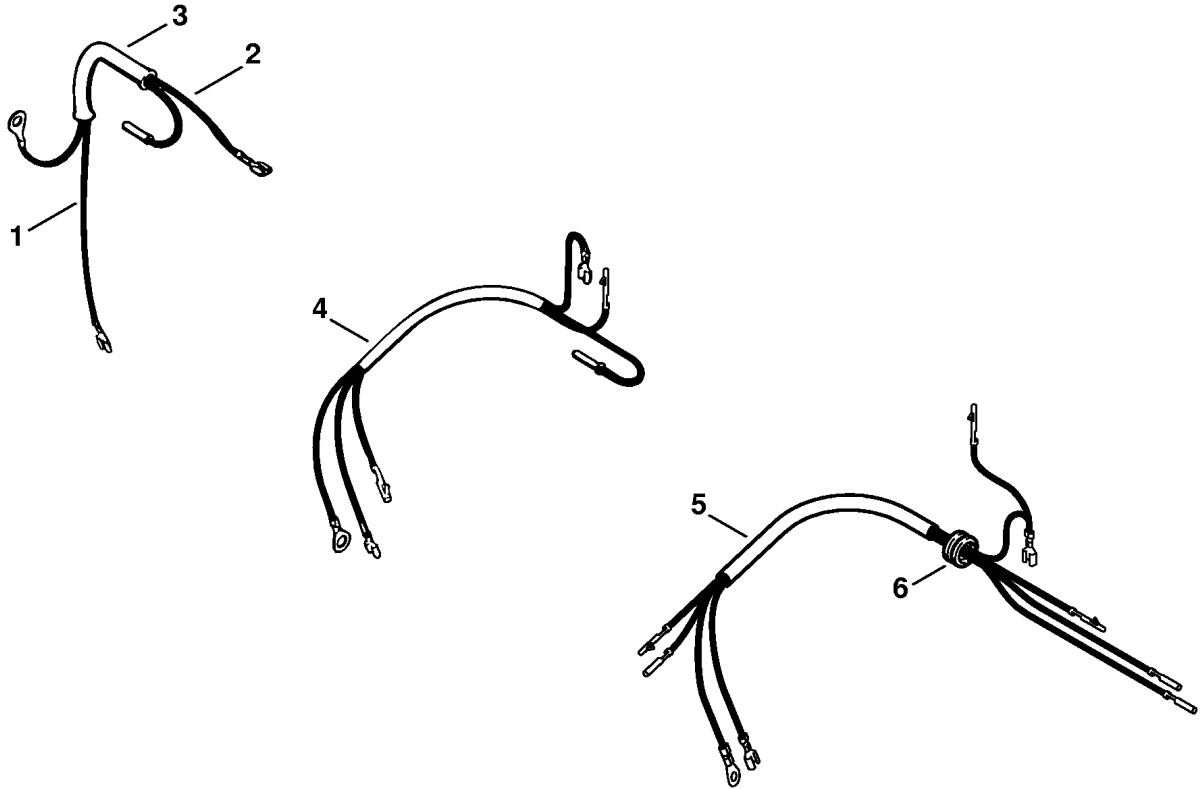
(1) MS 660, (2) MS 660-W, (3) MS 660-Magnum, (4) MS 660-R Magnum, (5) MS 660-Arctic,
(6) MS 660-Magnum BR



178ET052 SC

Reference	Item number	Qty	Description
1	1122 400 1217	1	Flywheel (1,3,4,6) (25.2005)
2	1122 400 1218	1	Flywheel (2) (25.2005)
3	1122 400 1202	1	Flywheel (5) (25.2005)
4	1128 404 3501	1	Generator (2) □ 5
5	1118 431 6600	1	Terminal pin (2,5)
6	1128 404 3502	1	Generator (5) □ 5, 7
7	1118 431 6700	1	Terminal socket (5)
8	9022 313 0660	3	Spline screw IS-M4x12 (2,5)
9	1121 442 0402	1	Insulating hose 35 mm / 1.4" (2)
9	1121 442 0402	2	Insulating hose 35 mm / 1.4" (5)
10	1121 405 1900	1	Support (2,5)
11	9211 260 1340	1	Hexagon nut M10x1
12	1122 400 1314	1	Ignition module □ 13 - 15
13	0000 989 1010	1	Grommet
14		1	Ignition lead 185 mm
	0000 405 0600	1	Ignition lead 1 m (B)
	0000 930 2251	1	Ignition lead 10 m (B)
15	0000 448 1250	1	Lead retainer
16	1117 442 0905	1	Insulating hose 110 mm / 4.3"
17	9022 341 1019	2	Spline screw IS-M5x20
18	0000 998 0604	1	Torsion spring
19	1128 405 1000	1	Spark plug boot
20	1128 084 1400	1	Cover

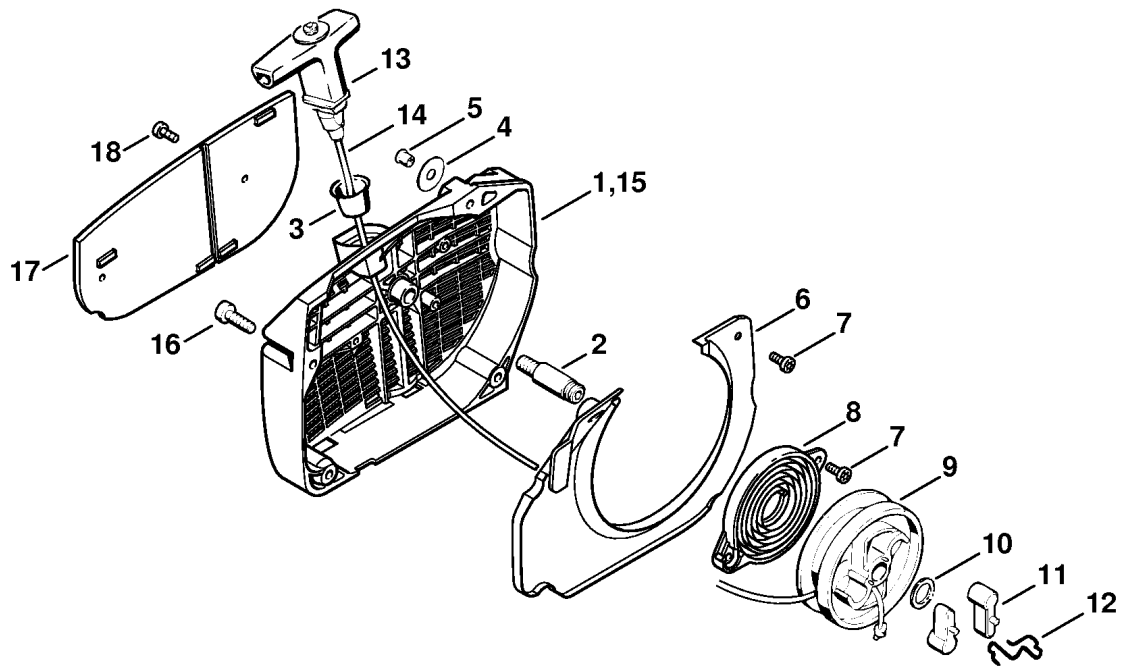
(1) MS 660, (2) MS 660-W, (3) MS 660-Magnum, (4) MS 660-R Magnum, (5) MS 660-Arctic,
(6) MS 660-Magnum BR



178ET051 SC

Reference	Item number	Qty	Description
1	1121 440 1103	1	Short circuit wire 305 mm / 12.1" (1,3,4,6)
2	1122 440 2201	1	Ground wire 270 mm / 10 5/8" (1,3,4,6)
3	1122 442 0400	1	Insulating hose 100 mm / 4" (1,3,4,6)
4	1122 440 3007	1	Wiring harness (2)
5	1122 440 3002	1	Wiring harness (5)
			□ 6
6	0000 989 0812	1	Grommet (5)
	0751 010 1110	1	Lead 10 m / 33' (A, B)

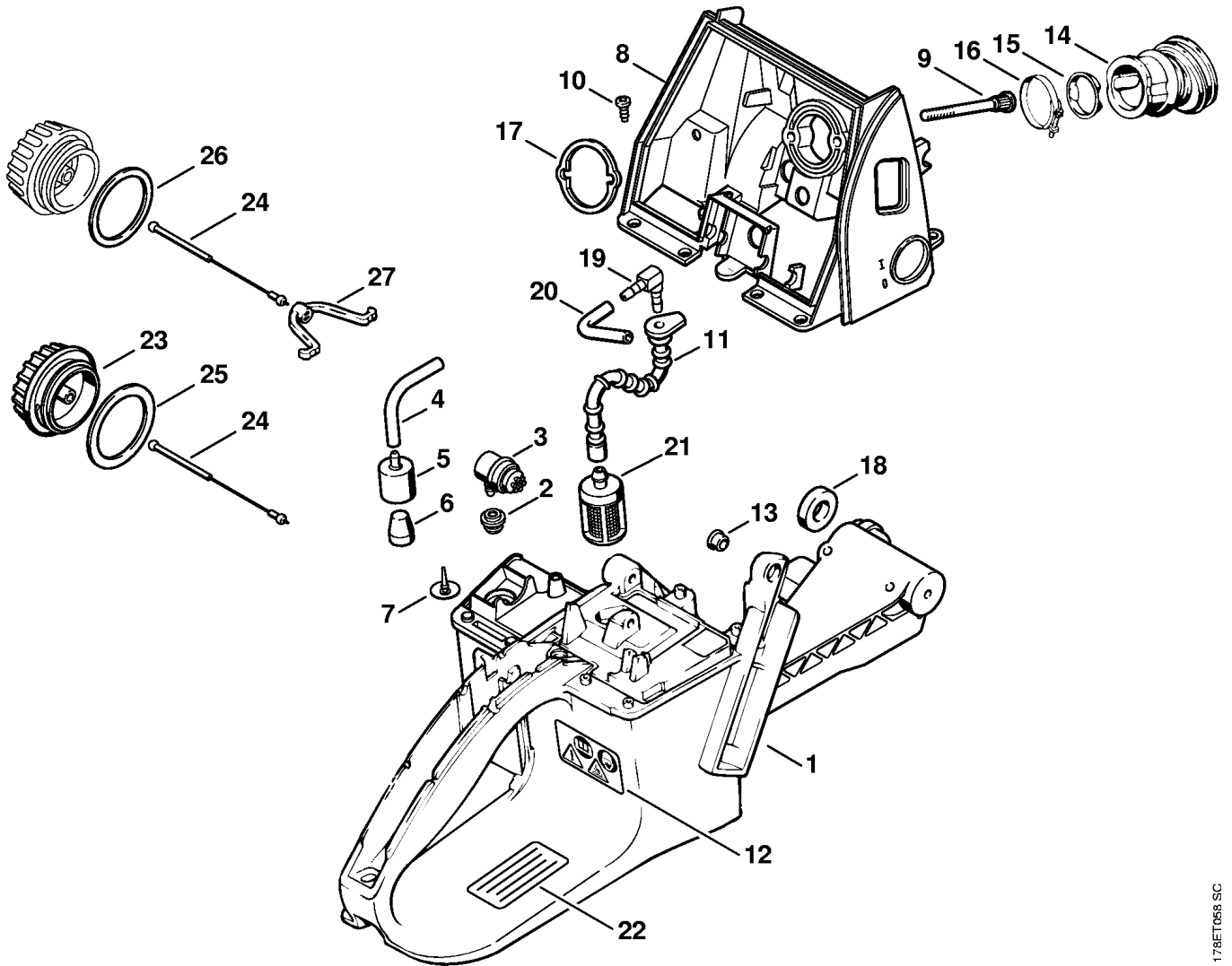
(1) MS 660, (2) MS 660-W, (3) MS 660-Magnum, (4) MS 660-R Magnum, (5) MS 660-Arctic,
(6) MS 660-Magnum BR



178ET006 SC

Reference	Item number	Qty	Description
	1122 080 2110	1	Fan housing with rewind starter □ 1 - 14
1	1122 080 1816	1	Fan housing □ 2 - 7
2	1122 084 6502	1	Axle
3	1110 084 9102	1	Bushing
4	0000 958 0607	1	Washer
5	9416 868 6530	1	Hollow rivet 6.5x0.5x6.8
6	1122 084 7809	1	Segment
7	9022 341 0650	4	Spline screw IS-M4x10
8	1122 190 0605	1	Rewind spring
9	1122 195 0400	1	Rope rotor
10	1119 162 8925	1	Washer Ø 12 mm
11	1124 195 7200	2	Pawl
12	1124 195 3500	1	Spring
13	1122 190 3400	1	Starter grip ElastoStart □ 14
14	1122 190 2900	1	Starter rope Ø 4.5 mm
	0000 930 2268	1	Starter rope Ø 4.5mm / 28 pieces (B)
15	1122 080 2102	1	Fan housing with rewind starter available in Brazil only □ 1 - 14
16	9022 371 1020	3	Spline screw IS-M5x20
17	1122 084 8207	1	Cover plate (B)
18	9022 341 0650	2	Spline screw IS-M4x10 (B)

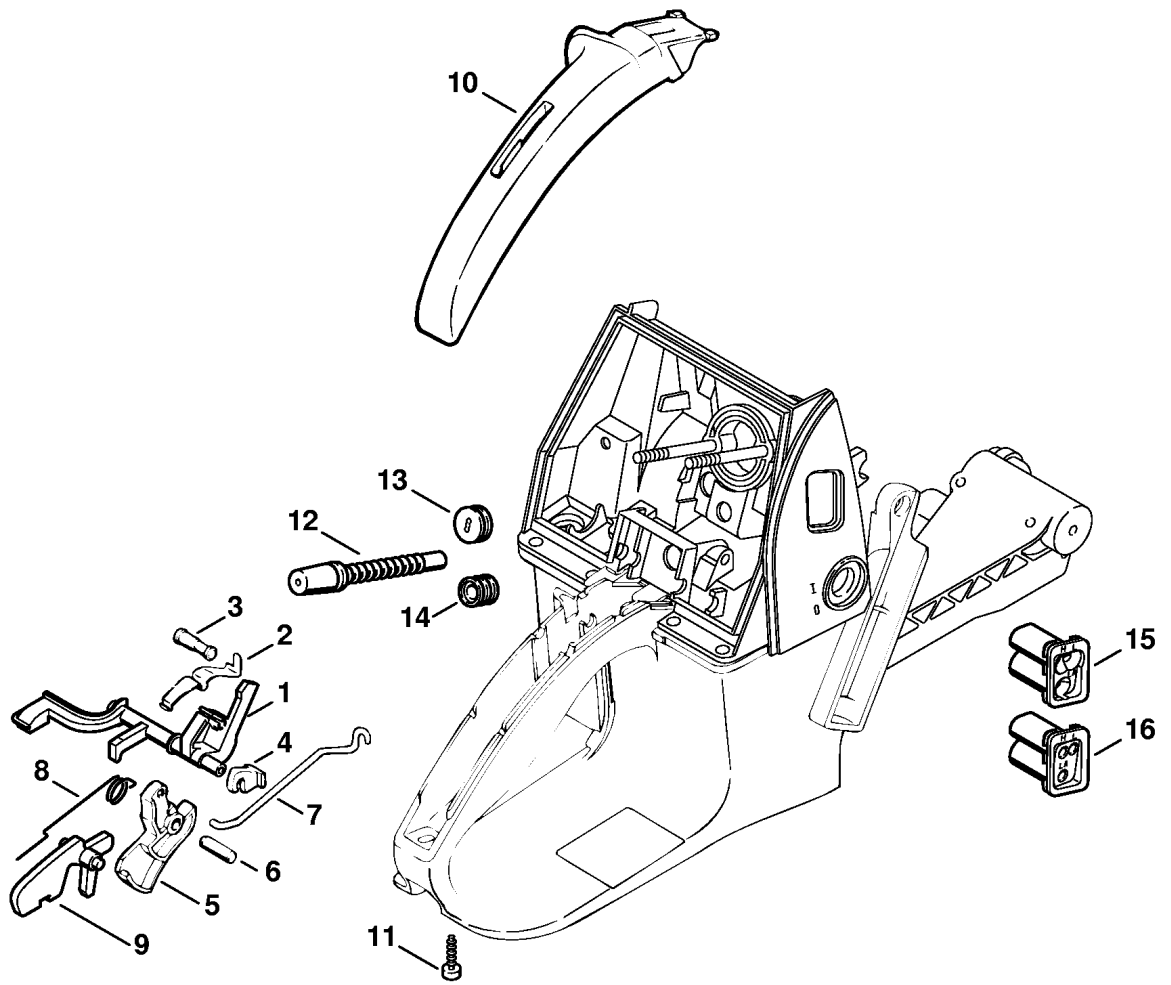
(1) MS 660, (2) MS 660-W, (3) MS 660-Magnum, (4) MS 660-R Magnum, (5) MS 660-Arctic,
(6) MS 660-Magnum BR



178ET058 SC

Reference	Item number	Qty	Description
1	1122 350 0817	1	Tank housing □ 2, 3, 8 - 13
2	1122 353 9200	1	Grommet
3	0000 350 5802	1	Tank vent
4	* 1122 350 5803	1	Tank vent → 1 63 264 273, 3 60 548 783 (15.2005) □ 5
5	* 1122 353 9102	1	Connector → 1 63 264 273, 3 60 548 783 (15.2005)
6	* 1122 358 1800	1	Filter → 1 63 264 273, 3 60 548 783 (15.2005)
7	* 1110 353 1600	1	Valve → 1 63 264 273, 3 60 548 783 (15.2005)
8	1122 120 0104	1	Carburetor housing □ 9
9	1122 122 6602	2	Collar screw
10	9104 003 0650	7	Self-tapping screw P4x10
11	1124 358 7700	1	Hose
12	0000 967 3662	1	Warning pictogram MS
13	0000 963 0808	1	Bushing
14	1122 141 2201	1	Manifold
15	1122 141 1805	1	Sleeve
16	9771 021 2620	1	Hose clip Ø 36x5
17	1128 121 8600	1	Washer
18	1128 791 8400	1	Ring
19	1122 353 2600	1	Elbow connector
20		1	Hose 3.1x5.7x52 mm (D)
	0712 923 8004	1	Hose 3.1x5.7 mm x 10 m (A,B)
	0000 930 2803	1	Hose 3.1x5.7 mm x 1 m (A,B)
21	0000 350 3504	1	Pickup body
22	0000 967 3685	1	Instruction label (6) BR
23	0000 350 0509	1	Filler cap □ 24, 25
24	0000 350 0900	1	Rope
25	0000 359 1203	1	Sealing ring
26	* 0000 359 1230	1	Sealing ring (44.2007)
27	0000 353 0600	1	Hook

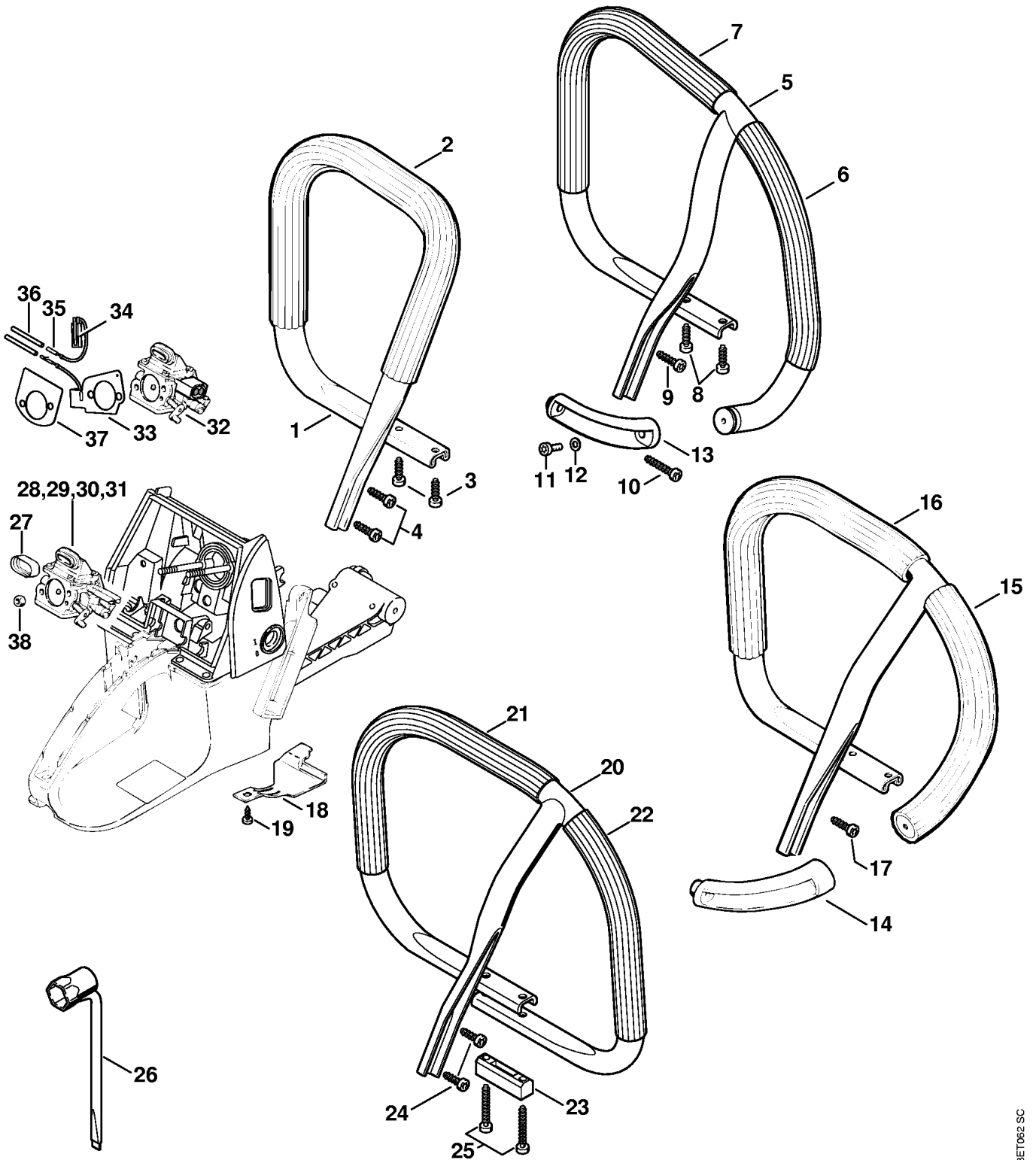
(1) MS 660, (2) MS 660-W, (3) MS 660-Magnum, (4) MS 660-R Magnum, (5) MS 660-Arctic,
(6) MS 660-Magnum BR



178ET055 SC

Reference	Item number	Qty	Description
1	1122 182 0902	1	Switch shaft
2	1122 442 1603	1	Contact spring
3	1122 442 2500	1	Axle
4	1122 182 2100	1	Support
5	1122 180 1500	1	Throttle trigger □ 6
6	9371 470 2600	1	Cylindrical pin 5x16
7	1122 182 1502	1	Throttle rod
8	1117 182 4500	1	Torsion spring
9	1117 182 0805	1	Trigger interlock
10	1122 791 0600	1	Handle molding
11	9074 478 3076	1	Pan head self-tapping screw IS-P4x19
12	1127 141 8600	1	Impulse hose
13	0000 989 0812	1	Grommet
14	1122 182 0700	1	Grommet
15	1122 123 7504	1	Grommet (1-5)
16	1122 123 7503	1	Grommet (3) AUS, NZ
16	1122 123 7503	1	Grommet (6)
16 *	1122 123 7503	1	Grommet (1,2) (27.2003)

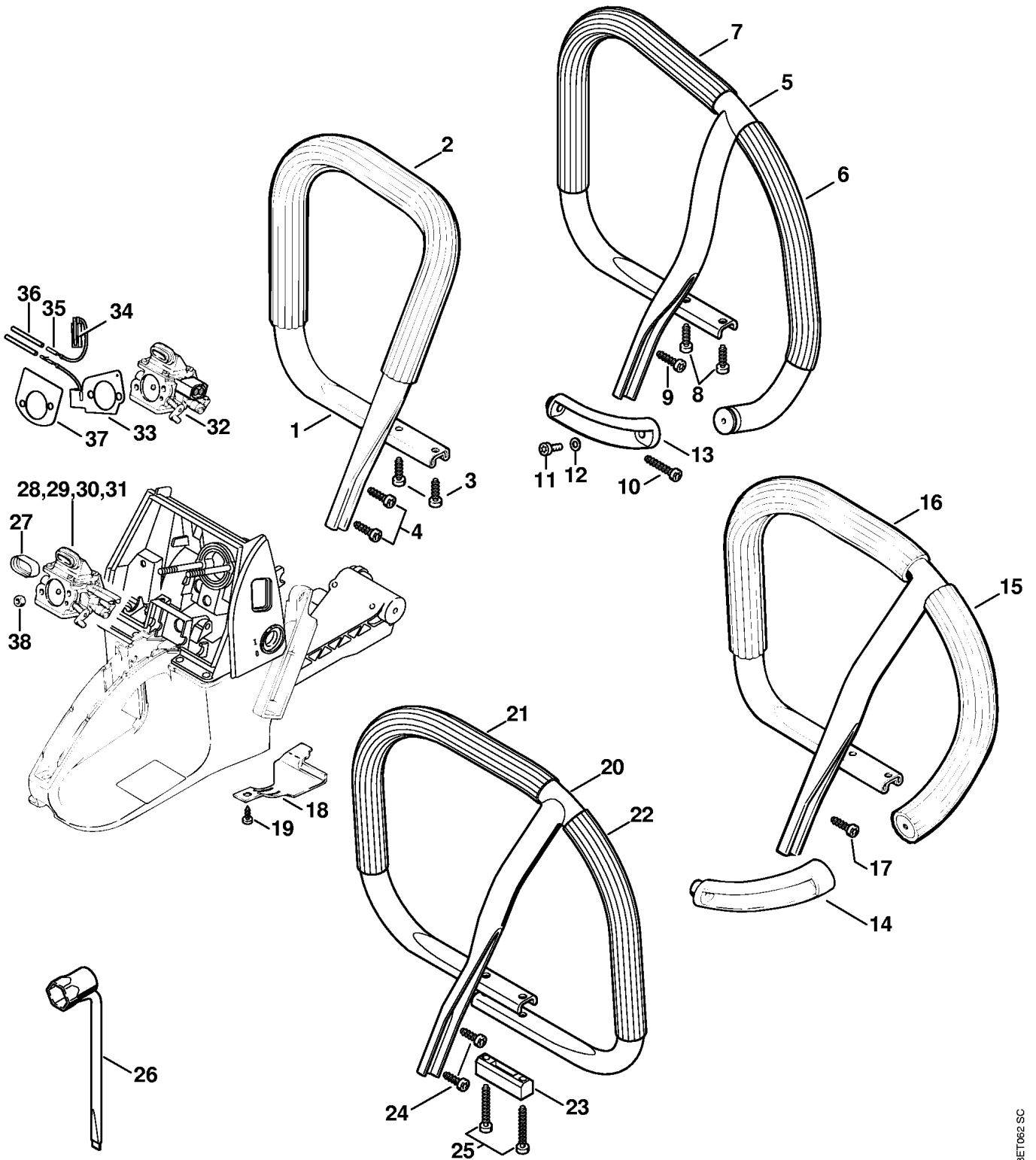
(1) MS 660, (2) MS 660-W, (3) MS 660-Magnum, (4) MS 660-R Magnum, (5) MS 660-Arctic,
(6) MS 660-Magnum BR



178ET062 SC

Reference	Item number	Qty	Description
1	1122 790 1750	1	Handlebar (1,3,6) □ 2 - 4
2		1	Handle hose 460 mm / 18 1/8" (D) (1,3,6)
	0000 791 2009	1	Handle hose Ø 19 mm x 5 m / 3/4x197" (A,B)
3	9074 478 4435	2	Pan head self-tapping screw IS-P6x19 (1,3,6)
4	9074 478 4475	2	Pan head self-tapping screw IS-P6x21.5 (1,3,6)
5	1122 790 3611	1	Wrap around handlebar (4) □ 6, 7, 11 - 13
6		1	Handle hose 220 mm / 8 5/8" (D) (4)
7		1	Handle hose 380 mm / 15" (D) (4)
8	9074 478 4435	2	Pan head self-tapping screw IS-P6x19 (4)
9	9074 478 4475	1	Pan head self-tapping screw IS-P6x21.5 (4)
10	9074 478 4675	1	Pan head self-tapping screw IS-P6x32.5 (4)
11	9022 371 1020	1	Spline screw IS-M5x20 (4)
12	9307 021 0120	1	Washer 5.3 (4)
13	1122 791 5501	1	Elbow connector (4)
14	* 1122 791 5500	1	Elbow connector (4) (10.2008)
	* 1122 790 3650	1	Wrap around handlebar (4) (10.2008) □ 5 - 7, 11 - 13
15	*	1	Handle hose 265 mm / 10 7/16" (D) (4) (10.2008)
16	*	1	Handle hose 370 mm / 14 9/16" (D) (4) (10.2008)
17	* 9074 478 4435	1	Pan head self-tapping screw IS-P6x19 (4) (10.2008)
18	1122 351 0901	1	Guard (3,4,5) □ 19
19	9074 478 2970	1	Pan head self-tapping screw IS-P4x10 (3,4,5)

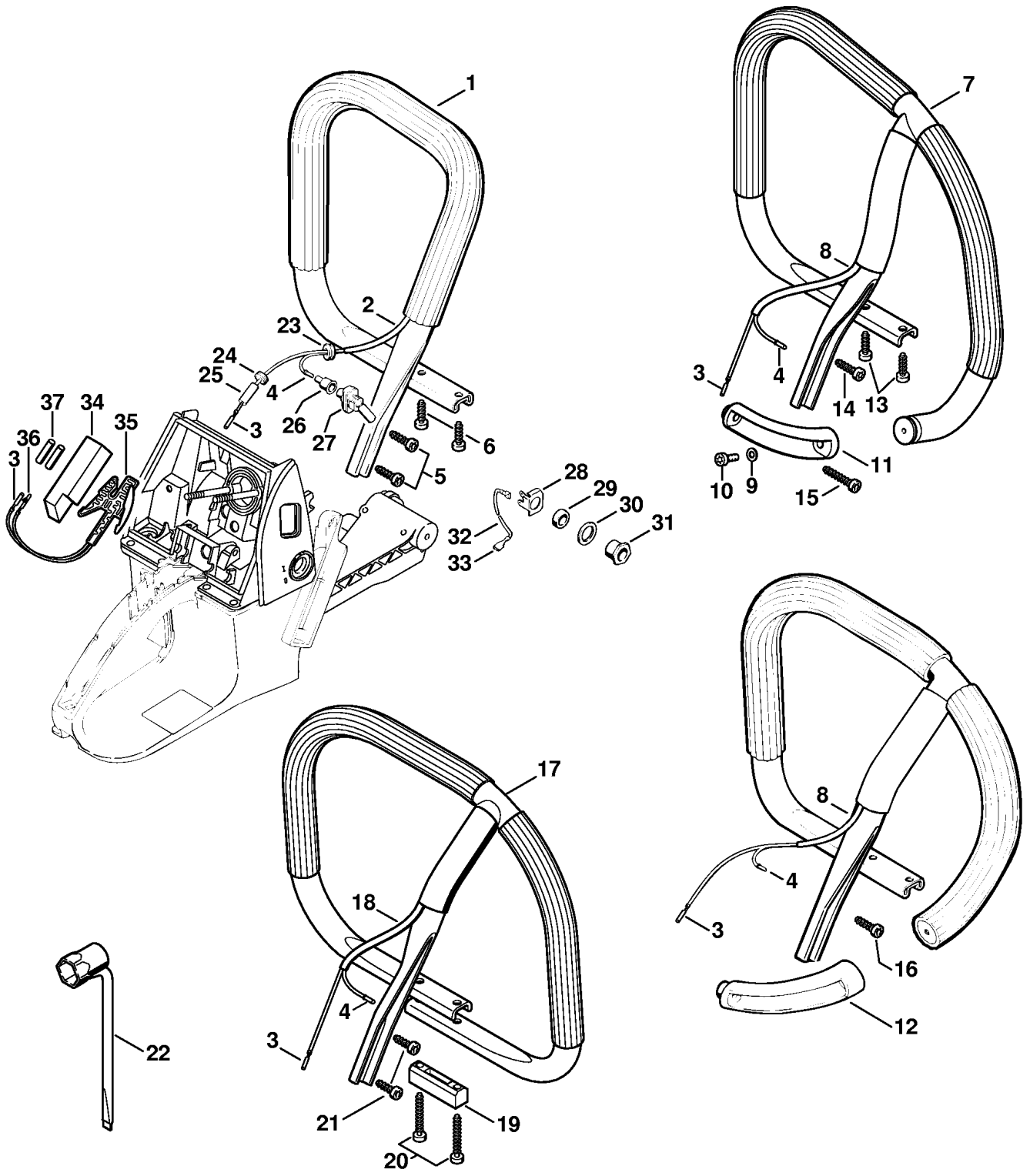
(1) MS 660, (2) MS 660-W, (3) MS 660-Magnum, (4) MS 660-R Magnum, (5) MS 660-Arctic,
(6) MS 660-Magnum BR



178ET062 SC

Reference	Item number	Qty	Description
	* 1122 007 1003	1	Set wrap around handlebar (B) (1,3,4,6) CDN (10.2008) □ 20 - 26
20	*	1	Wrap around handlebar (B,C) (1,3,4,6) CDN (10.2008)
21	*	1	Handle hose 420 mm / 16 1/2" (D) (1,3,4,6) CDN (10.2008)
22	*	1	Handle hose 240 mm / 9 1/2" (D) (1,3,4,6) CDN (10.2008)
23	* 1122 791 4500	1	Spacer (B) (1,3,4,6) CDN (10.2008)
24	* 9074 478 4435	2	Pan head self-tapping screw IS-P6x19 (B) (1,3,4,6) CDN (10.2008)
25	* 9074 478 4705	2	Pan head self-tapping screw IS-P6x40 (B) (1,3,4,6) CDN (10.2008)
26	* 1124 890 3400	1	Combination wrench (B) (1,3,4,6) CDN (10.2008)
27	1124 121 9100	1	Bushing
28	1122 120 0621	1	Carburetor WJ-67A (3) AUS, NZ
29	1122 120 0621	1	Carburetor WJ-67A (6)
30	* 1122 120 0621	1	Carburetor WJ-67A (1,2) (27.2003)
31	1122 120 0623	1	Carburetor WJ-76A (6) BR
32	1122 120 0618	1	Carburetor WJ-69B (1,2,3,4,5)
33	1128 430 6002	1	Heating element (5) □ 34, 35
34	1128 430 0501	1	Switch (5) □ 35
35	1118 431 6700	1	Terminal socket (5)
36	1121 442 0402	2	Insulating hose 35 mm / 1.4" (5)
37	1122 121 7000	1	Baffle (5)
38	9210 260 0700	2	Hexagon nut M5

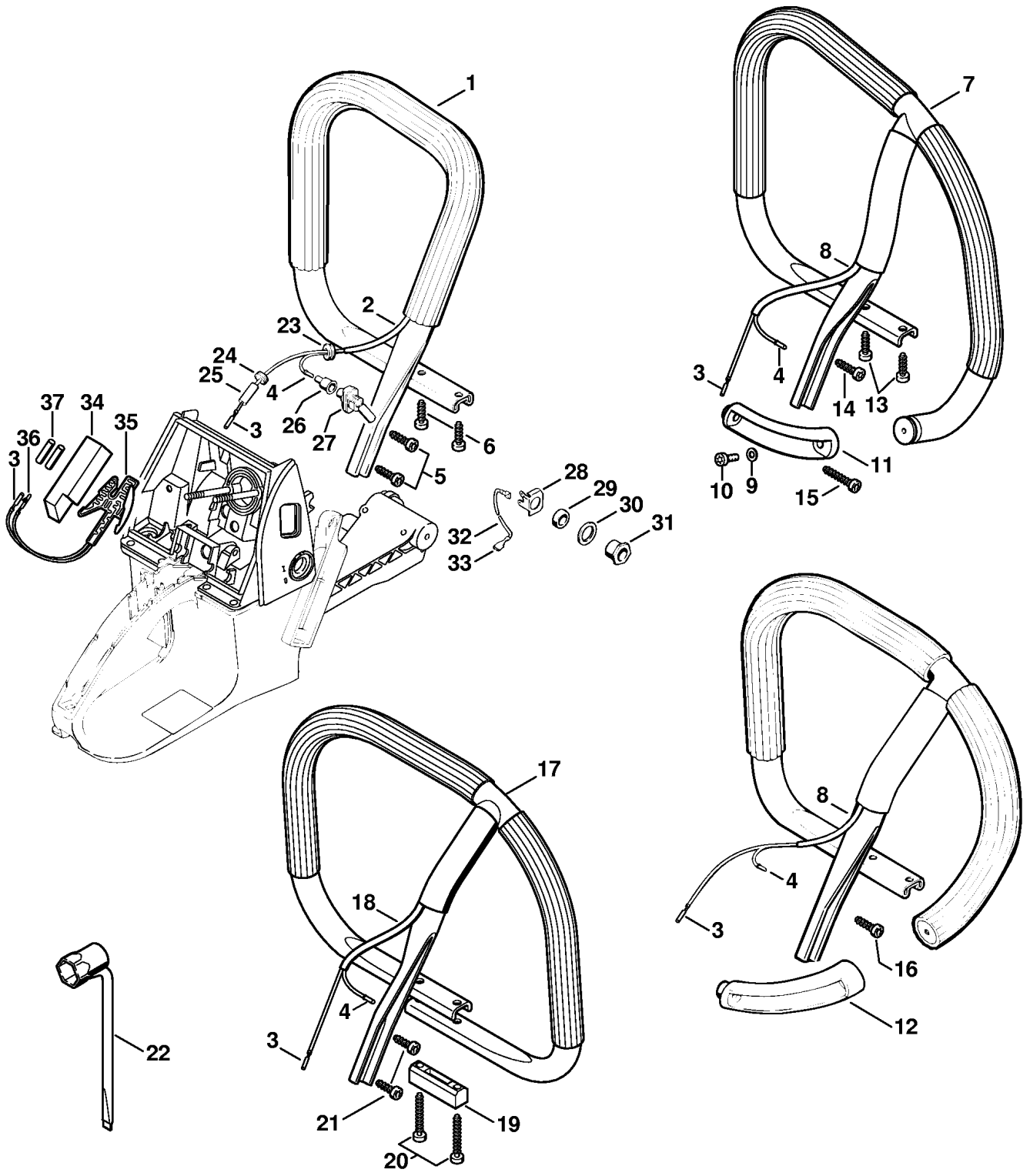
(1) MS 660, (2) MS 660-W, (3) MS 660-Magnum, (4) MS 660-R Magnum, (5) MS 660-Arctic,
(6) MS 660-Magnum BR



178ET063 SC

Reference	Item number	Qty	Description
1	1122 790 1752	1	Handlebar (2) □ 2 - 6
2	1124 442 0400	1	Insulating hose 160 mm / 6.3" (2)
3	1118 431 6700	1	Terminal socket (2,5)
4	0000 442 7000	1	Contact sleeve (2,5)
5	9074 478 4475	2	Pan head self-tapping screw IS-P6x21.5 (2)
6	9074 478 4435	2	Pan head self-tapping screw IS-P6x19 (2)
7	1122 790 3610	1	Wrap around handlebar (5) □ 3, 4, 8 - 11
	* 1122 790 3651	1	Wrap around handlebar (5) (10.2008) □ 3, 4, 7 - 11
8	1121 442 0403	1	Insulating hose 130 mm / 5.1" (5)
9	9307 021 0120	1	Washer 5.3 (5)
10	9022 371 1020	1	Spline screw IS-M5x20 (5)
11	1122 791 5501	1	Elbow connector (5)
12	* 1122 791 5500	1	Elbow connector (5) (10.2008)
13	9074 478 4435	2	Pan head self-tapping screw IS-P6x19 (5)
14	9074 478 4475	1	Pan head self-tapping screw IS-P6x21.5 (5)
15	9074 478 4675	1	Pan head self-tapping screw IS-P6x32.5 (5)
16	* 9074 478 4435	1	Pan head self-tapping screw IS-P6x19 (5) (10.2008),

(1) MS 660, (2) MS 660-W, (3) MS 660-Magnum, (4) MS 660-R Magnum, (5) MS 660-Arctic,
(6) MS 660-Magnum BR



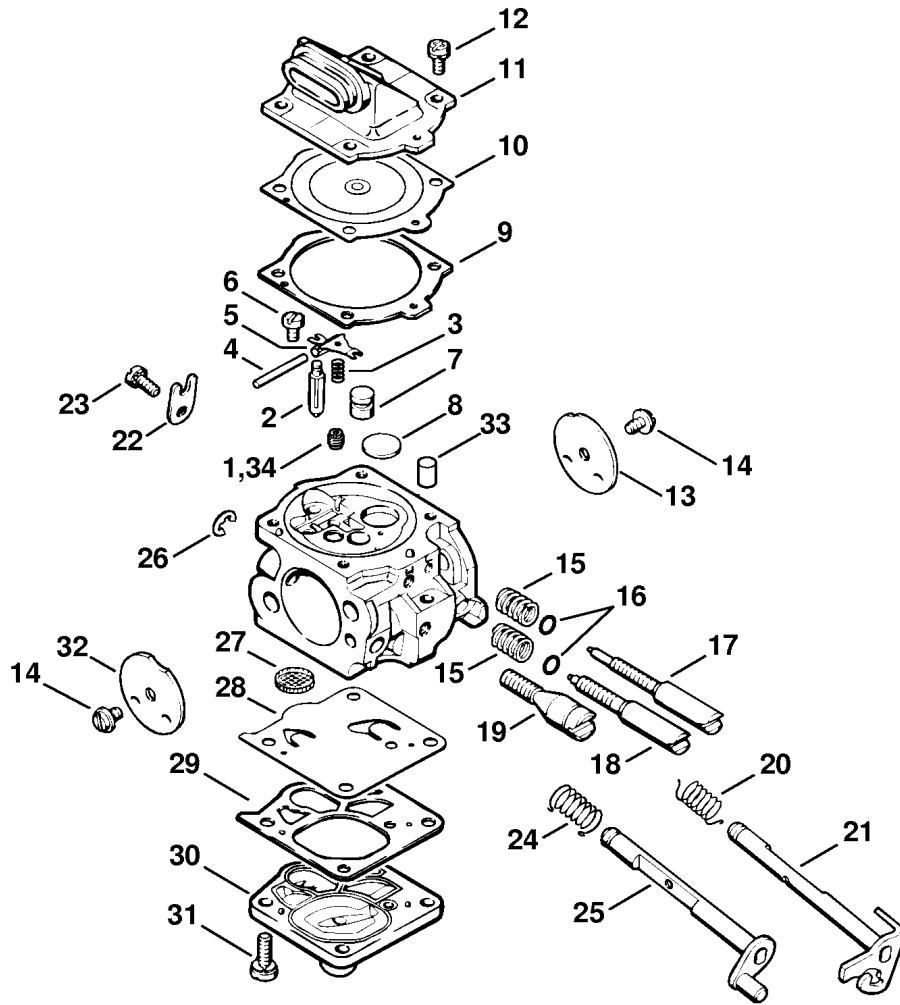
178ET063 SC

Reference	Item number	Qty	Description
	* 1122 007 1022	1	Set wrap around handlebar (B) (2,5) CDN (10.2008) □ 3, 4, 17 - 22
17	*	1	Wrap around handlebar (B,D) (2,5) CDN (10.2008)
18	* 1121 442 0403	1	Insulating hose 130 mm / 5.1" (B) (2,5) CDN (10.2008)
19	* 1122 791 4500	1	Spacer (B) (2,5) CDN (10.2008)
20	* 9074 478 4705	2	Pan head self-tapping screw IS-P6x40 (B) (2,5) CDN (10.2008)
21	* 9074 478 4435	2	Pan head self-tapping screw IS-P6x19 (B) (2,5) CDN (10.2008)
22	* 1124 890 3400	1	Combination wrench (B) (2,5) CDN (10.2008)
23	0000 989 0808	1	Grommet (2,5)
24	0000 989 0813	1	Grommet (2,5)
25	1121 442 0406	1	Insulating hose 40 mm / 1.6" (2,5)
26	1110 432 9200	1	Grommet (2,5)
27	1110 430 0202	1	Stop switch (2,5)
28	1122 431 2700	1	Twin connector tag (2,5)
29	0000 961 1406	1	Ring (2,5)
30	0000 958 1406	1	Washer (2,5)
31	1118 432 2200	1	Hexagon nut M12 (2,5)
32	1122 440 2205	1	Ground wire (2,5) □ 33
33	0751 030 8953	2	Terminal socket 4.8-1 (2,5)
34	1121 791 9000	1	Clamp (2,5)
35	1128 434 5000	1	Heating element (2,5) □ 3, 36
36	1118 431 6600	1	Terminal pin (2,5)
37	1121 442 0402	2	Insulating hose 35 mm / 1.4" (2,5)

(1) MS 660, (2) MS 660-W, (3) MS 660-Magnum, (4) MS 660-R Magnum, (5) MS 660-Arctic,
(6) MS 660-Magnum BR

Reference	Item number	Qty	Description
	1122 120 0621	1	Carburetor WJ-67A (1,2,3) □ 1 - 33
1	1122 121 5604	1	Fixed jet 0.64 (1,2,3)
2	1110 121 5100	1	Inlet needle (1,2,3)
3	1117 122 3005	1	Spring (1,2,3)
4	1117 121 9200	1	Spindle (1,2,3)
5	1117 121 5000	1	Inlet control lever (1,2,3)
6	1114 122 7400	1	Round head screw (1,2,3)
7	1115 121 5401	1	Valve jet (1,2,3)
8	1122 121 0700	1	Cup plug (1,2,3)
9	1116 129 0900	1	Gasket (1,2,3)
10	1117 121 4700	1	Metering diaphragm (1,2,3)
11	1122 121 0805	1	End cover (1,2,3)
12	1121 122 7101	4	Screw (1,2,3)
13	1115 121 3301	1	Throttle shutter (1,2,3)
14	1115 122 7400	2	Round head screw (1,2,3)
15	1128 122 3003	2	Spring (1,2,3)
16	4203 122 3600	1	Sealing ring (1,2,3)
17	1122 122 6802	1	Low speed adjustment screw (1,2,3) □ 16
18	1122 122 6706	1	High speed adjustment screw (1,2,3) □ 16
19	1122 122 6200	1	Idle speed adjustment screw (1,2,3)
20	1122 122 3200	1	Torsion spring (1,2,3)
21	1122 120 7101	1	Throttle shaft with lever (1,2,3)
22	1110 122 9300	1	Clip (1,2,3)
23	1106 122 7400	1	Round head screw (1,2,3)

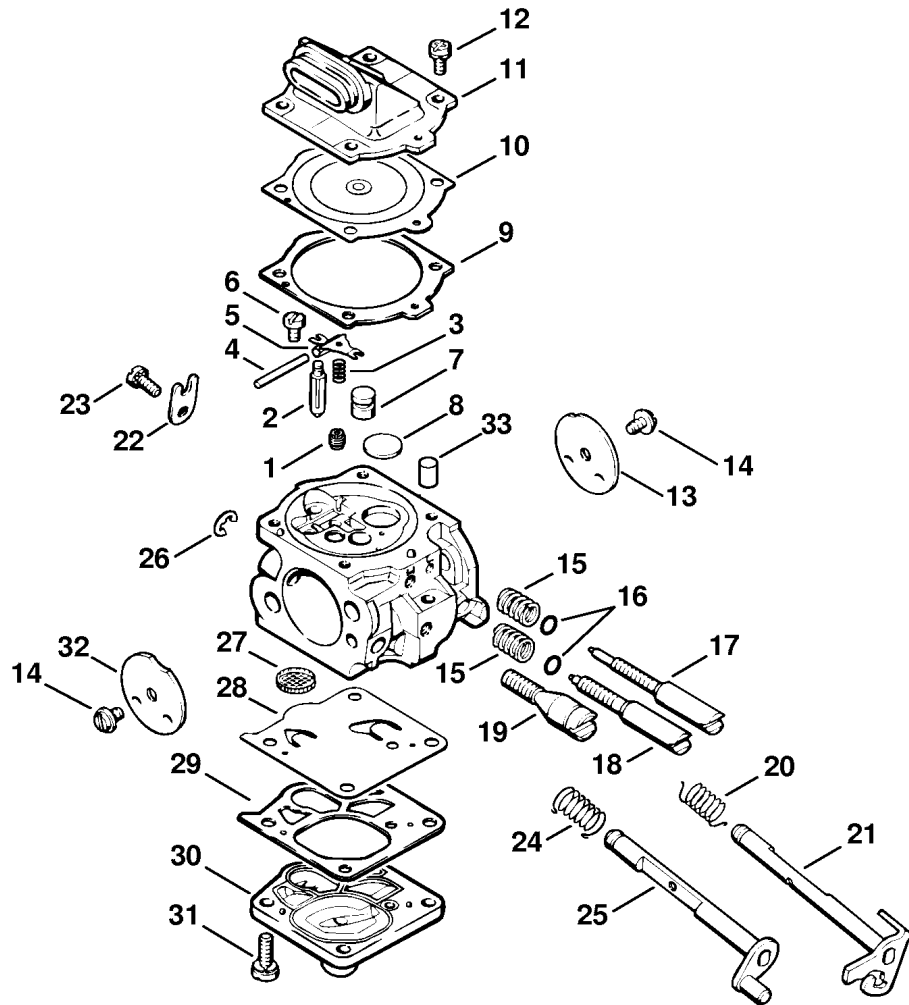
(1) MS 660, (2) MS 660-W, (3) MS 660-Magnum, (4) MS 660-R Magnum, (5) MS 660-Arctic,
(6) MS 660-Magnum BR



178ET030 SC

Reference	Item number	Qty	Description
24	1122 122 3205	1	Torsion spring (1,2,3)
25	1122 120 7200	1	Choke shaft with lever (1,2,3)
26	1117 122 9000	1	E-clip (1,2,3)
27	1114 121 7800	1	Strainer (1,2,3)
28	1115 121 4800	1	Pump diaphragm (1,2,3)
29	1115 129 1100	1	Gasket (1,2,3)
30	1115 120 0800	1	End cover (1,2,3)
31	1121 122 7101	4	Screw (1,2,3)
32	1122 121 2900	1	Choke shutter (1,2,3)
33	1122 121 7700	1	Clamp (1,2,3)
34	1122 121 5603	1	Fixed jet 0.62 (B) (1,2,3) High altitude
	1122 007 1060	1	Set of carburetor parts (1,2,3) □ 9, 10, 28, 29

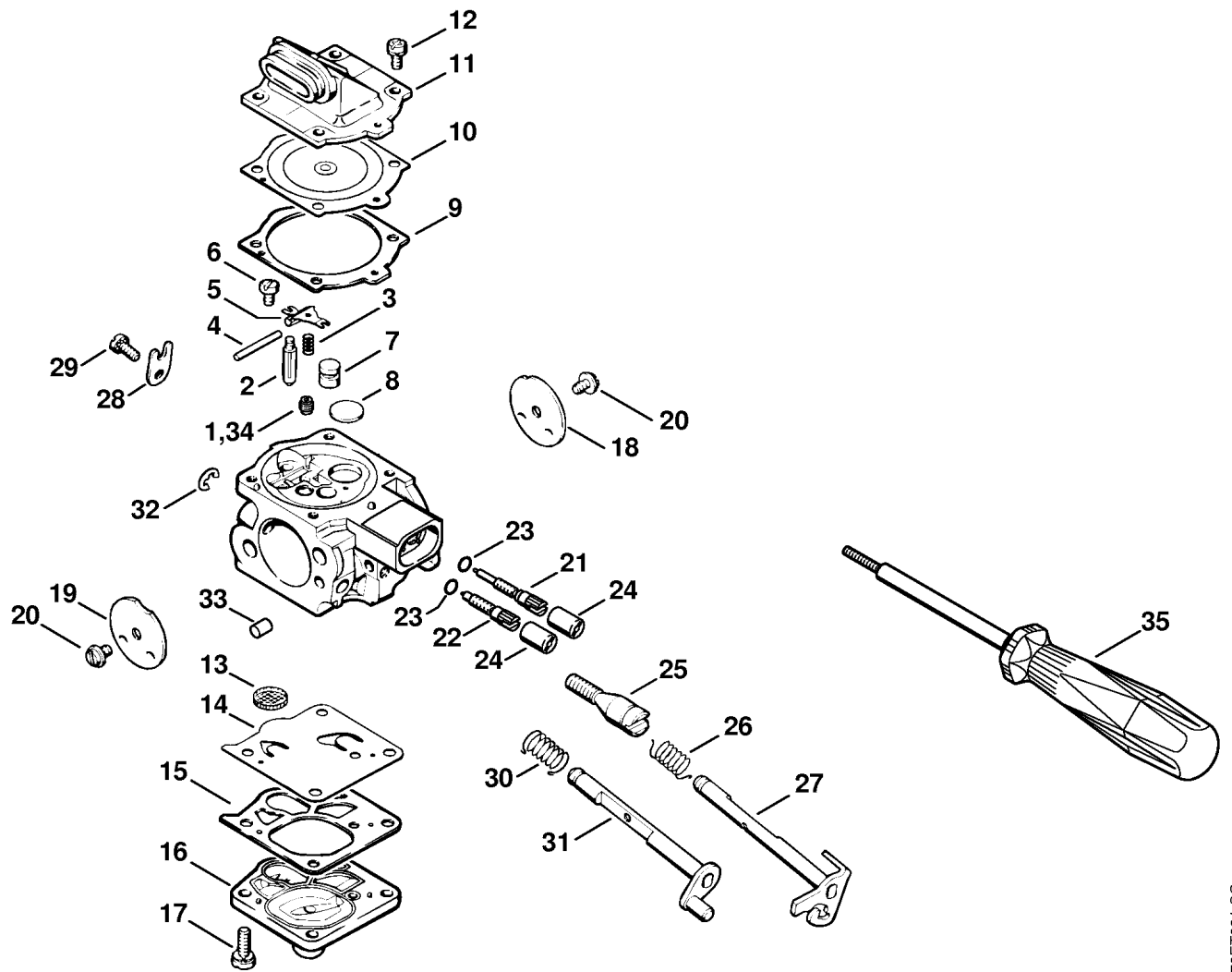
(1) MS 660, (2) MS 660-W, (3) MS 660-Magnum, (4) MS 660-R Magnum, (5) MS 660-Arctic,
(6) MS 660-Magnum BR



178ET032 SC

Reference	Item number	Qty	Description
	1122 120 0623	1	Carburetor WJ-76A (6) □ 1 - 33
1	1122 121 5607	1	Fixed jet 0.74 (6)
2	1110 121 5100	1	Inlet needle (6)
3	1117 122 3005	1	Spring (6)
4	1117 121 9200	1	Spindle (6)
5	1117 121 5000	1	Inlet control lever (6)
6	1114 122 7400	1	Round head screw (6)
7	1115 121 5401	1	Valve jet (6)
8	1122 121 0700	1	Cup plug (6)
9	1116 129 0900	1	Gasket (6)
10	1117 121 4700	1	Metering diaphragm (6)
11	1122 121 0805	1	End cover (6)
12	1121 122 7101	4	Screw (6)
13	1115 121 3301	1	Throttle shutter (6)
14	1115 122 7400	2	Round head screw (6)
15	1128 122 3003	2	Spring (6)
16	4203 122 3600	1	Sealing ring (6)
17	1122 122 6802	1	Low speed adjustment screw (6) □ 16
18	1122 122 6706	1	High speed adjustment screw (6) □ 16
19	1122 122 6200	1	Idle speed adjustment screw (6)
20	1122 122 3200	1	Torsion spring (6)
21	1122 120 7101	1	Throttle shaft with lever (6)
22	1110 122 9300	1	Clip (6)
23	1106 122 7400	1	Round head screw (6)
24	1122 122 3205	1	Torsion spring (6)
25	1122 120 7200	1	Choke shaft with lever (6)
26	1117 122 9000	1	E-clip (6)
27	1114 121 7800	1	Strainer (6)
28	1115 121 4800	1	Pump diaphragm (6)
29	1115 129 1100	1	Gasket (6)
30	1115 120 0800	1	End cover (6)
31	1121 122 7101	4	Screw (6)
32	1122 121 2900	1	Choke shutter (6)
33	1122 121 7700	1	Clamp (6)

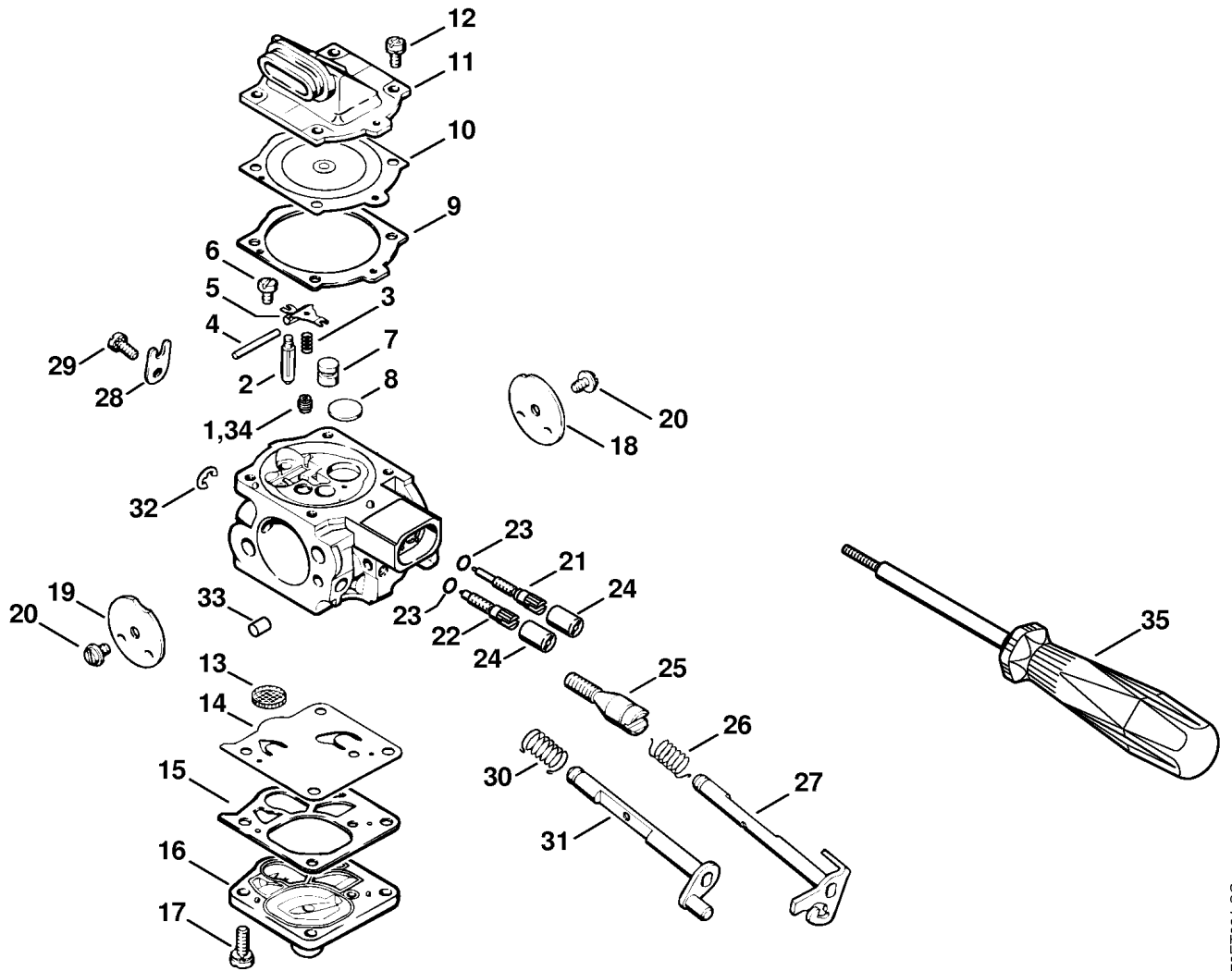
(1) MS 660, (2) MS 660-W, (3) MS 660-Magnum, (4) MS 660-R Magnum, (5) MS 660-Arctic,
(6) MS 660-Magnum BR



178ET031 SC

Reference	Item number	Qty	Description
	1122 120 0618	1	Carburetor WJ-69B (1-5) USA, CDN □ 1 - 33
1	1122 121 5604	1	Fixed jet 0.64 (1-5)
2	1110 121 5100	1	Inlet needle (1-5)
3	1117 122 3005	1	Spring (1-5)
4	1117 121 9200	1	Spindle (1-5)
5	1117 121 5000	1	Inlet control lever (1-5)
6	1114 122 7400	1	Round head screw (1-5)
7	1115 121 5401	1	Valve jet (1-5)
8	1122 121 0700	1	Cup plug (1-5)
9	1116 129 0900	1	Gasket (1-5)
10	1117 121 4700	1	Metering diaphragm (1-5)
11	1122 121 0805	1	End cover (1-5)
12	1121 122 7101	4	Screw (1-5)
13	1114 121 7800	1	Strainer (1-5)
14	1115 121 4800	1	Pump diaphragm (1-5)
15	1115 129 1100	1	Gasket (1-5)
16	1115 120 0800	1	End cover (1-5)
17	1121 122 7101	4	Screw (1-5)
18	1115 121 3301	1	Throttle shutter (1-5)
19	1122 121 2900	1	Choke shutter (1-5)
20	1115 122 7400	2	Round head screw (1-5)

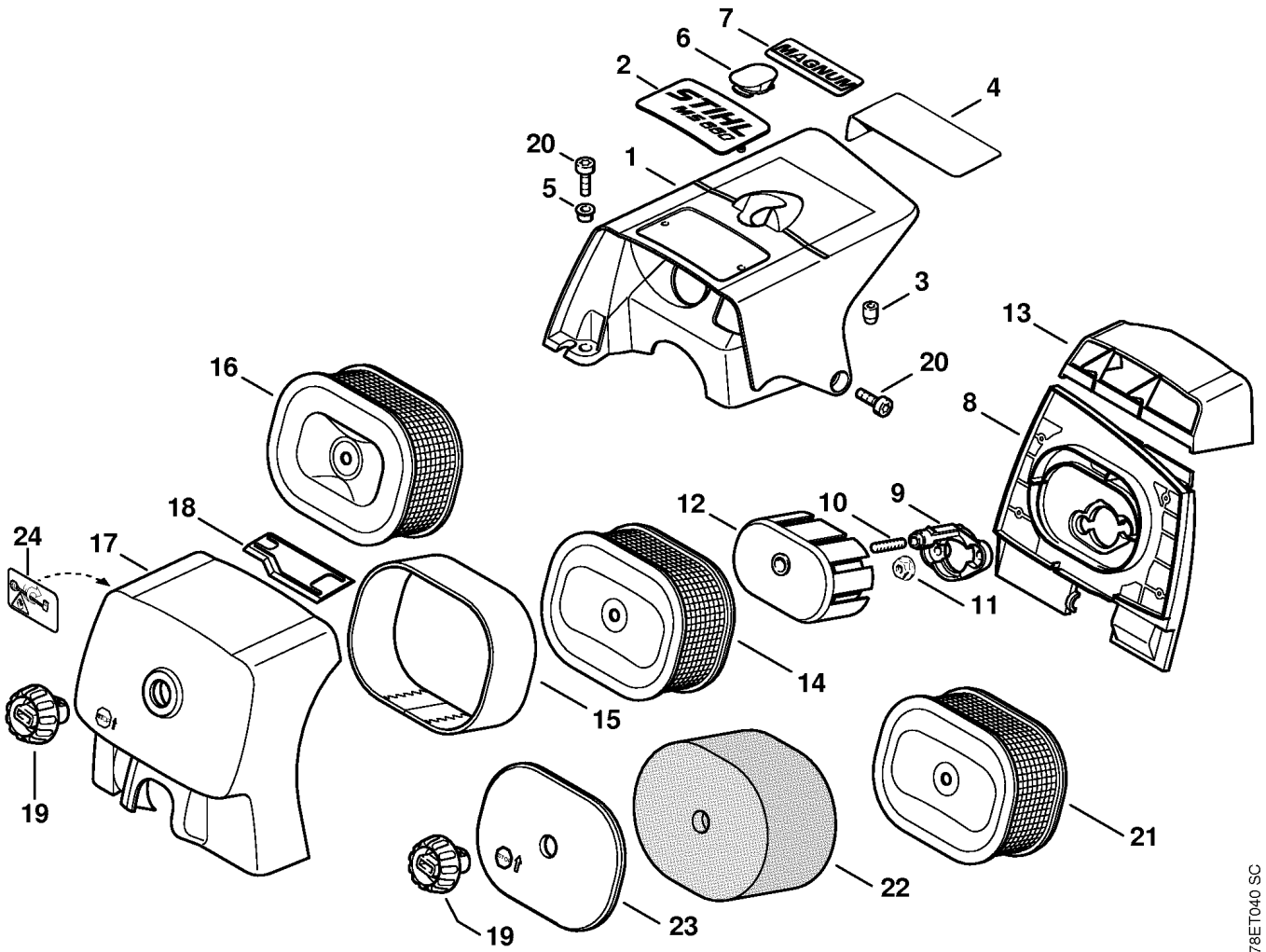
(1) MS 660, (2) MS 660-W, (3) MS 660-Magnum, (4) MS 660-R Magnum, (5) MS 660-Arctic,
(6) MS 660-Magnum BR



178ET031 SC

Reference	Item number	Qty	Description
21	1122 122 6803	1	Low speed adjustment screw (1-5) □ 23
22	1122 122 6703	1	High speed adjustment screw (1-5) □ 23
23	4203 122 3600	1	Sealing ring (1-5)
24	4203 121 2700	2	Cap (1-5)
25	1122 122 6200	1	Idle speed adjustment screw (1-5)
26	1122 122 3200	1	Torsion spring (1-5)
27	1122 120 7101	1	Throttle shaft with lever (1-5)
28	1110 122 9300	1	Clip (1-5)
29	1106 122 7400	1	Round head screw (1-5)
30	1122 122 3205	1	Torsion spring (1-5)
31	1122 120 7200	1	Choke shaft with lever (1-5)
32	1117 122 9000	1	E-clip (1-5)
33	1122 121 7700	1	Clamp (1-5)
34	1122 121 5603	1	Fixed jet 0.62 (B) (1-5) High altitude
35	5910 890 4500	1	Puller (B) (1-5)
	1122 007 1060	1	Set of carburetor parts (1-5) □ 9, 10, 14, 15

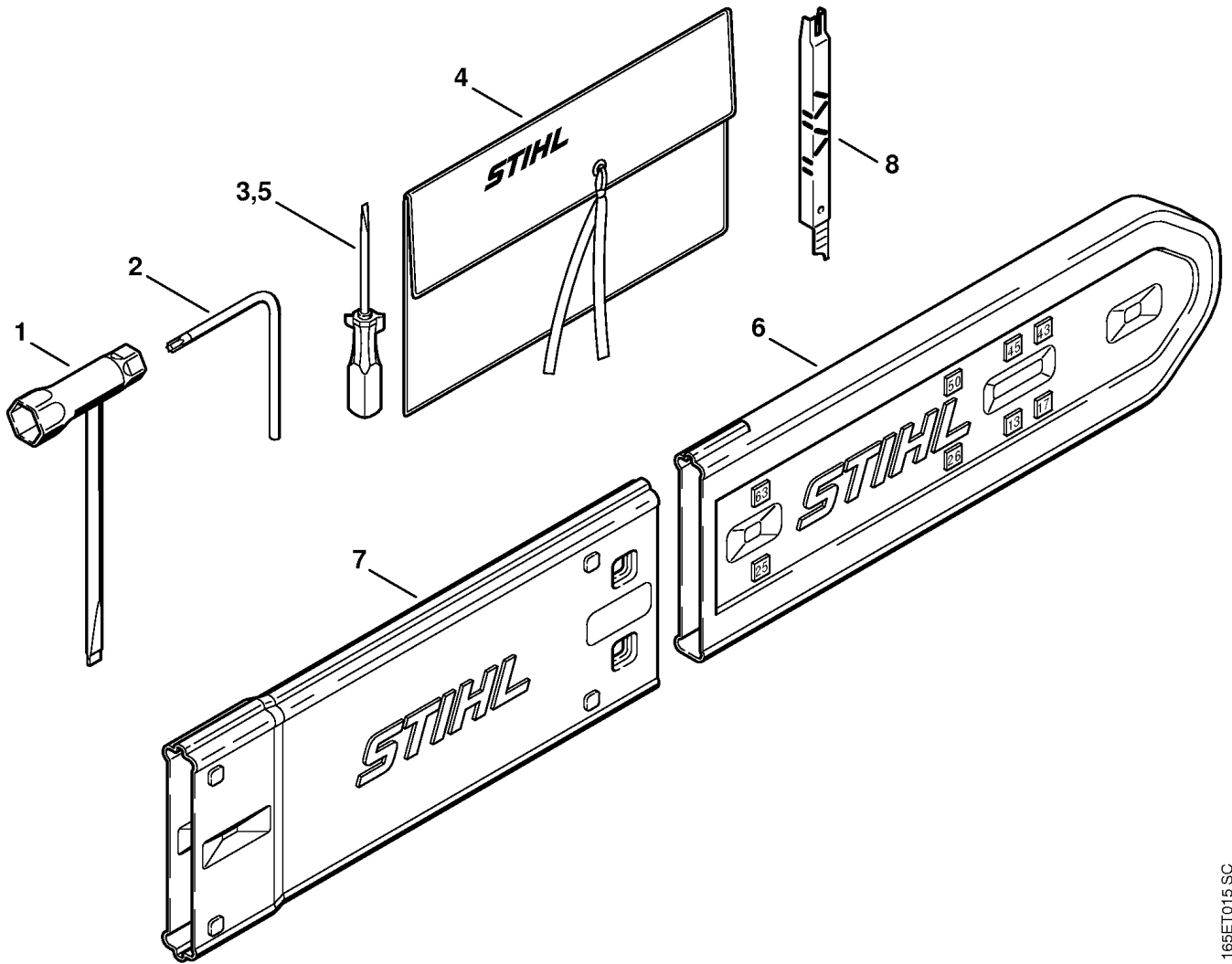
(1) MS 660, (2) MS 660-W, (3) MS 660-Magnum, (4) MS 660-R Magnum, (5) MS 660-Arctic,
(6) MS 660-Magnum BR



178ET040 SC

Reference	Item number	Qty	Description
1	1122 080 1604	1	Shroud □ 2 - 5
2	1122 967 1506	1	Model plate MS 660
3	1121 084 7100	1	Cap
4	1124 084 8300	1	Reflector foil
5	0000 963 0808	3	Bushing
6	1122 084 7101	1	Cap available in Brazil only
7	0000 967 1593	1	Model plate Magnum (3,4,5,6)
8	1122 120 3402	1	Filter base
9	1122 120 2200	1	Flange □ 10
10	9121 319 0960	1	Stud M5x12x9
11	9216 261 0700	2	Hexagon nut M5
12	1122 121 6900	1	Baffle
13	1122 141 6300	1	Air baffle
14	0000 120 1654	1	Air filter HD □ 15
15	0000 141 0300	1	Prefilter
16	0000 120 1653	1	Air filter, wire mesh
17	1122 140 1002	1	Filter cover □ 18, 19
18	1122 141 4000	1	Slide
19	1124 140 9500	1	Twist lock
20	9022 341 0980	3	Spline screw IS-M5x16
	0000 120 1655	1	Air filter (B) AUS □ 19, 21 - 23
21	0000 120 1601	1	Air filter, fleece (B) AUS
22	0000 141 0600	1	Prefilter (B) AUS
23	0000 124 1000	1	Supporting plate (B) AUS
24	0000 967 3692	1	Warning pictogram Filler cap USA, CDN

(1) MS 660, (2) MS 660-W, (3) MS 660-Magnum, (4) MS 660-R Magnum, (5) MS 660-Arctic,
(6) MS 660-Magnum BR



165ET015.SC

Reference	Item number	Qty	Description
	1121 890 1400	1	Tool kit □ 1 - 4
1	1129 890 3401	1	Combination wrench
2	0812 370 1000	1	Screwdriver T27x120x70
3	0000 890 2300	1	Screwdriver (1,2,3,4,5)
4	0000 891 0801	1	Tool roll (1,2,3,4,5)
5	0000 890 2305	1	Screwdriver (6) available in Brazil only
6	0000 792 9129	1	Chain scabbard
7	0000 792 9132	1	Chain scabbard extension up to 63 cm
8	1110 893 4000	1	Filing gauge (B)

(1) MS 660, (2) MS 660-W, (3) MS 660-Magnum, (4) MS 660-R Magnum, (5) MS 660-Arctic,
(6) MS 660-Magnum BR